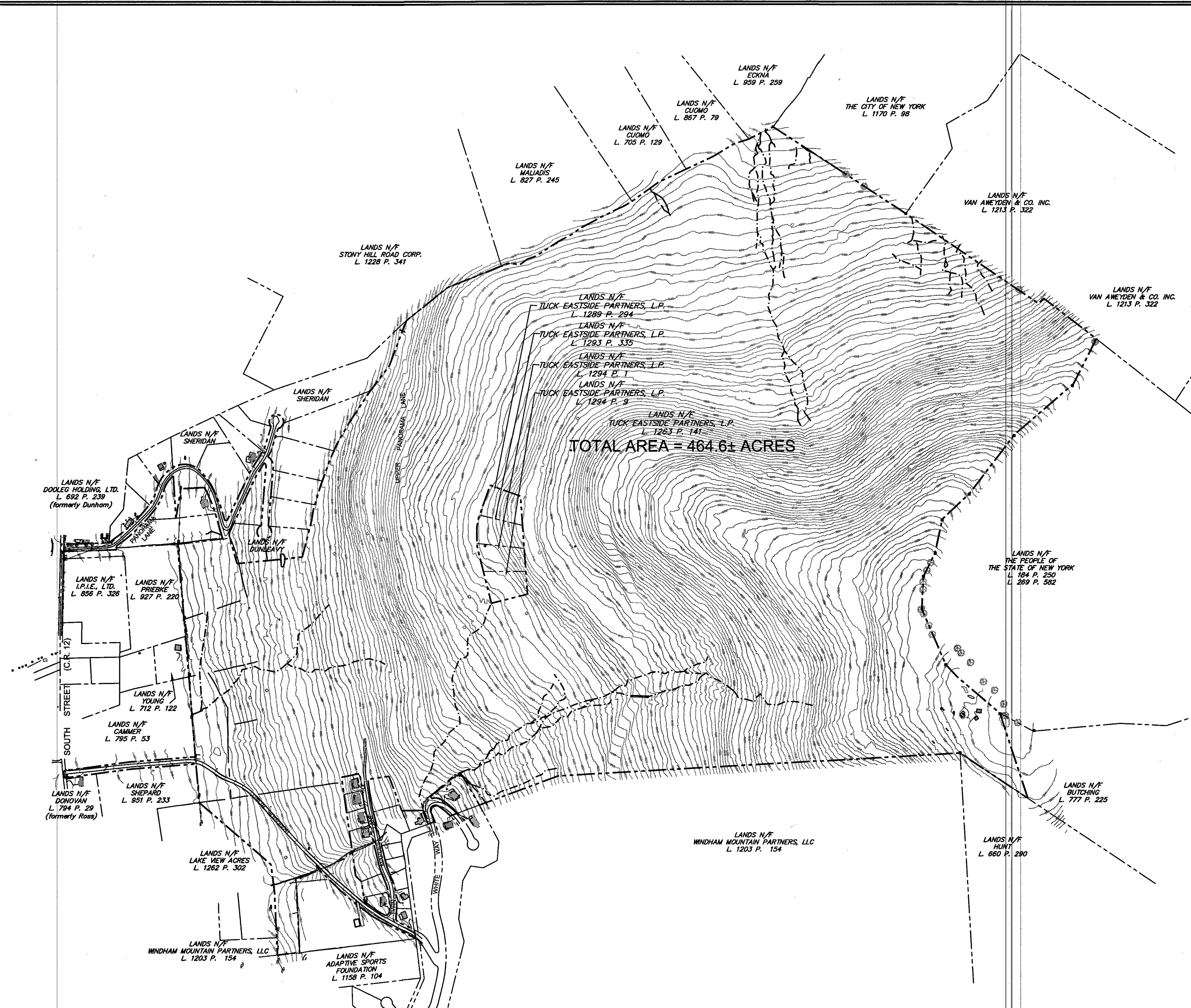


DELINEATED WATERCOURSES

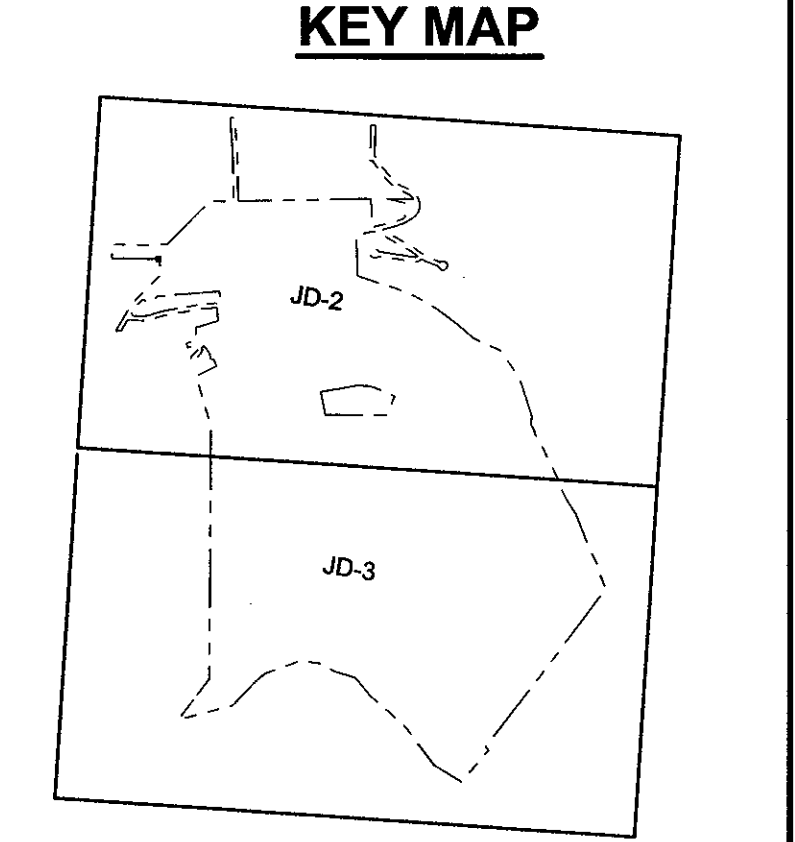
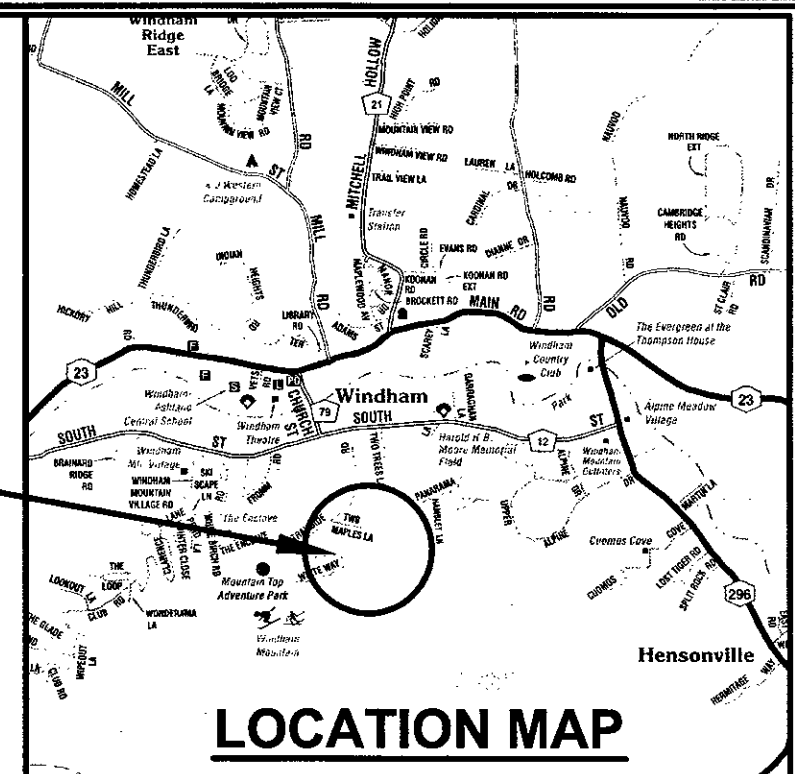
DESIGNATION	NUMBER	LENGTH	HYDROLOGICAL TYPE
S	1	2,936	Perennial
S	1.1	1,631	Intermittent
S	1.2	144	Intermittent
S	1.2.1	180	Intermittent
S	1.2.2	667	Intermittent
S	1.3	1,000	Intermittent
S	1.3.1	62	Intermittent
S	1.3.2	12	Intermittent
S	1.3.3	36	Intermittent
S	1.5	488	Intermittent
S	1.6	218	Intermittent
S	1.8	583	Perennial (?)
S	1.8.1	201	Intermittent
S	1.8.2	114	Intermittent
S	1.12	289	Perennial or Intermittent
S	1.12.2	646	Intermittent
S	3	63	Intermittent
S	3.1	766	Intermittent
S	3.1.2	729	Intermittent / ephemeral
S	3.1.3	529	Intermittent
S	3.2	694	Intermittent
S	6	44	Intermittent
S	6.1	204	Intermittent
S	6.2	187	Intermittent

S	7	1,614	Perennial in lower part, intermittent in upper part
S	7.1	99	Intermittent
S	7.2	84	Intermittent
S	7.3	114	Intermittent
S	7.4	564	Intermittent
S	7.6	559	Intermittent
S	8	27	Intermittent
S	9	868	Intermittent
S	12	422	Intermittent
S	12.1	229	Intermittent
S	12.2	158	Intermittent
S	12.3	45	Intermittent
S	13	328	Intermittent
S	13.1	49	Intermittent
S	13.2	159	Intermittent
S	13.3	229	Intermittent
S	15	571	Intermittent
S	16	259	Intermittent
S-D	1	177	Intermittent
S-D	2	70	Intermittent
S-D	3	444	Intermittent
S-D	3.1	116	Intermittent
S-D	3.2	476	Intermittent
S-D	3.2.1	54	Intermittent
S-D	4	264	Intermittent
S-D	4.1	62	Intermittent

TOTAL LINEAR FEET OF WATER COURSE 20,464



SITE LOCATION



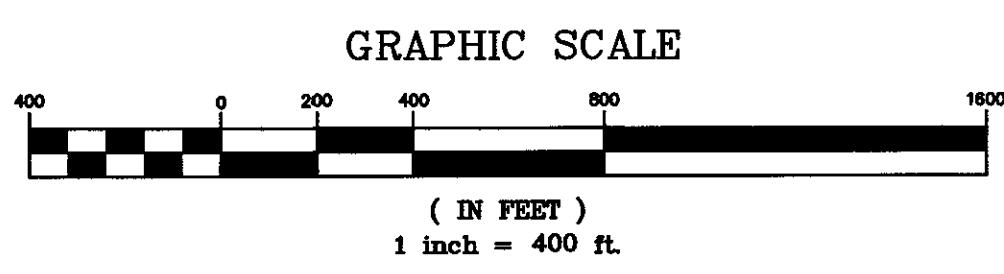
LEGEND

- DENOTES IRON ROD SET (IRS)
- " " PROPERTY ANGLE
- " " IRON PIPE (IPF) OR IRON ROD (IRF) FOUND
- " " STONE ON END / ROCK PILE
- " " UTILITY POLE AND OVERHEAD UTILITY
- " " WIRE FENCE
- " " STONE WALL
- " " TREE WITH WIRE
- " " TREE WITH BLAZE &/OR PAINT
- " " TREE WITH FLAGGING
- " " DECIDUOUS TREE
- " " CONIFEROUS TREE
- " " ROCK OR BOULDER
- " " ROCK OUTCROP
- " " SNOWMAKING TOWER
- " " CHAIR LIFT TOWER
- " " WELL
- " " NYC DEP REGULATED WATERCOURSE

WATERCOURSES ON THIS SITE WERE LOCATED IN THE FIELD BY KAATERSKILL ASSOCIATES, USING A TRIMBLE GEO XT HANDHELD GPS UNIT, AS DELINEATED BY LA GROUP, P.C.

WATERCOURSE SEGMENTS S-D-1 THROUGH S-D-4 WERE LOCATED BY NYC DEP AND THE LINWORK WAS PROVIDED TO KAATERSKILL ASSOCIATES.

INSPECTIONS OF THE PROPERTY WERE MADE BY NYCDEP PERSONNEL ON THE FOLLOWING DATES: NOVEMBER 14, 2008, MAY 18, 2010, MAY 28, 2010, JUNE 24, 2010, JUNE 28, 2010, JULY 28, 2010, JULY 28, 2010, SEPTEMBER 1, 2010, SEPTEMBER 17, 2010, OCTOBER 19, 2010 AND DECEMBER 11, 2010. CHANGES MADE TO THE MAPPING OF WATERCOURSES AS A RESULT OF THESE INSPECTIONS ARE INCLUDED ON THESE DRAWINGS.



UNAUTHORIZED ALTERATION OR ADDITION TO THIS DRAWING IS A VIOLATION OF SECTION 7209, SUBDIVISION 2 OF THE NEW YORK STATE EDUCATION LAW. COPIES OF THIS DRAWING ARE VALID ONLY IF THEY BEAR THE SEAL OF THE PREPARER.

IT IS A VIOLATION OF NEW YORK STATE EDUCATION LAW FOR ANY PERSON TO ALTER THESE PLANS, SPECIFICATIONS OR REPORTS IN ANY WAY, UNLESS ACTING UNDER THE DIRECTION OF A LICENSED PROFESSIONAL (ARCHITECT, ENGINEER, LANDSCAPE ARCHITECT, SURVEYOR).

THIS SURVEY HAS BEEN PREPARED IN ACCORDANCE WITH THE CODE OF PRACTICE FOR LAND SURVEYS OF THE NEW YORK STATE ASSOCIATION OF PROFESSIONAL LAND SURVEYORS, DATED JULY 18, 1997.

KAATERSKILL ASSOCIATES
 SURVEYORS, ARCHITECTS AND ENGINEERS
 CAIRO, NY (518)622-9667

REV	DATE	REVISION AND NUMBER OF SHEETS	JWV APP.
1	7/19/11	REVISE SCALE AND NUMBER OF SHEETS	JWV
		DESCRIPTION	APP.

REVISIONS

WINDHAM MOUNTAIN SPORTING CLUB SITE
 OF LANDS OF
TUCK EASTSIDE PARTNERS, L.P.
 34 SALISBURY ROAD, DARIEN CT 06820
 OFF SOUTH STREET GREENE COUNTY, NY

NYC DEP REGULATED WATERCOURSE DELINEATION

PROJECT: 164207.01
 DATE: 6/14/2011
 SCALE: 1"=400'
 TAX MAP #: 95-1-28.1
 DRAWN BY: JWV
 CHECKED BY: CPV
 FILE: 164207-NYC DEP - Watercourse sheet JD-1.dwg

DRAWING: **JD-1**
 SHEET 1 of 3

CHRISTOPHER WALACHOWICZ
 NYS PLS #50368

UNAUTHORIZED ALTERATION OR ADDITION TO THIS DRAWING IS A VIOLATION OF SECTION 7209, SUBDIVISION 2 OF THE NEW YORK STATE EDUCATION LAW. COPIES OF THIS DRAWING ARE VALID ONLY IF THEY BEAR THE SEAL OF THE PREPARER.

IT IS A VIOLATION OF NEW YORK STATE EDUCATION LAW FOR ANY PERSON TO ALTER THESE PLANS, SPECIFICATIONS OR REPORTS IN ANY WAY, UNLESS ACTING UNDER THE DIRECTION OF A LICENSED PROFESSIONAL (ARCHITECT, ENGINEER, LANDSCAPE ARCHITECT, SURVEYOR).

THIS SURVEY HAS BEEN PREPARED IN ACCORDANCE WITH THE CODE OF PRACTICE FOR LAND SURVEYS OF THE NEW YORK STATE ASSOCIATION OF PROFESSIONAL LAND SURVEYORS, DATED JULY 19, 1997.

WATERCOURSES ON THIS SITE WERE LOCATED IN THE FIELD BY KAATERSKILL ASSOCIATES, USING A TRIMBLE GEO XT HANDHELD GPS UNIT, AS DELINEATED BY LA GROUP, P.C.

WATERCOURSE SEGMENTS S-D-1 THROUGH S-D-4 WERE LOCATED BY NYC DEP AND THE LINWORK WAS PROVIDED TO KAATERSKILL ASSOCIATES.

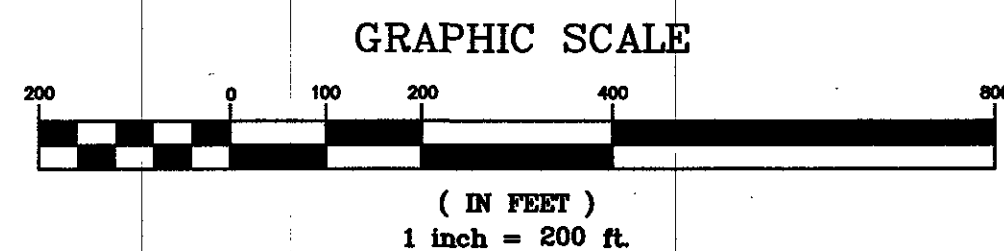
INSPECTIONS OF THE PROPERTY WERE MADE BY NYCOEP PERSONNEL ON THE FOLLOWING DATES: NOVEMBER 14, 2008, MAY 18, 2010, MAY 28, 2010, JUNE 24, 2010, JUNE 28, 2010, JULY 26, 2010, JULY 28, 2010, SEPTEMBER 1, 2010, SEPTEMBER 17, 2010, OCTOBER 19, 2010 AND DECEMBER 11, 2010. CHANGES MADE TO THE MAPPING OF WATERCOURSES AS A RESULT OF THESE INSPECTIONS ARE INCLUDED ON THESE DRAWINGS.

LEGEND

- DENOTES IRON ROD SET (IRS)
- PROPERTY ANGLE
- IRON PIPE (IPF) OR IRON ROD (IRF) FOUND
- STONE ON END / ROCK PILE
- UTILITY POLE AND OVERHEAD UTILITY
- WIRE FENCE
- STONE WALL
- TREE WITH WIRE
- TREE WITH BLAZE &/OR PAINT
- TREE WITH FLAGGING
- DECIDUOUS TREE
- CONIFEROUS TREE
- ROCK OR BOULDER
- ROCK OUTCROP
- SNOWMAKING TOWER
- CHAIR LIFT TOWER
- WELL
- NYC DEP REGULATED WATERCOURSE



DELINEATED WATERCOURSES			
DESIGNATION	NUMBER	LENGTH	HYDROLOGICAL TYPE
S	1	2,936	Perennial
S	1.1	1,631	Intermittent
S	1.2	144	Intermittent
S	1.2.1	180	Intermittent
S	1.2.2	667	Intermittent
S	1.3	1,000	Intermittent
S	1.3.1	62	Intermittent
S	1.3.2	12	Intermittent
S	1.3.3	36	Intermittent
S	1.5	488	Intermittent
S	1.6	218	Intermittent
S	1.8	583	Perennial (?)
S	1.8.1	201	Intermittent
S	1.8.2	114	Intermittent
S	1.12	289	Perennial or intermittent
S	1.12.2	646	Intermittent
S	3	63	Intermittent
S	3.1	766	Intermittent
S	3.1.2	729	Intermittent / ephemeral
S	3.1.3	529	Intermittent
S	3.2	694	Intermittent
S	6	44	Intermittent
S	6.1	204	Intermittent
S	6.2	187	Intermittent
S	7	1,614	Perennial in lower part, intermittent in upper part
S	7.1	99	Intermittent
S	7.2	84	Intermittent
S	7.3	114	Intermittent
S	7.4	564	Intermittent
S	7.6	559	Intermittent
S	8	27	Intermittent
S	9	868	Intermittent
S	12	422	Intermittent
S	12.1	229	Intermittent
S	12.2	158	Intermittent
S	12.3	45	Intermittent
S	13	328	Intermittent
S	13.1	49	Intermittent
S	13.2	159	Intermittent
S	13.3	229	Intermittent
S	15	571	Intermittent
S	16	259	Intermittent
S-D	1	177	Intermittent
S-D	2	70	Intermittent
S-D	3	444	Intermittent
S-D	3.1	116	Intermittent
S-D	3.2	476	Intermittent
S-D	3.2.1	54	Intermittent
S-D	4	264	Intermittent
S-D	4.1	62	Intermittent
TOTAL LINEAR FEET OF WATER COURSE		20,464	




CONTINUED ON SHEET JD-3

KAATERSKILL ASSOCIATES
 SURVEYORS, ARCHITECTS AND ENGINEERS
 CAIRO, NY (518)622-9667

REV	DATE	REVISION	SCALE AND NUMBER OF SHEETS	JWV	APP.
1	7/19/11	REVISE SCALE AND NUMBER OF SHEETS		JWV	
REVISIONS					

WINDHAM MOUNTAIN SPORTING CLUB SITE
 OF LANDS OF
TUCK EASTSIDE PARTNERS, L.P.
 34 SALISBURY ROAD, DARIEN CT 06820
 OFF SOUTH STREET GREENE COUNTY, NY

NYC DEP REGULATED WATERCOURSE DELINEATION

PROJECT: 164207.01
 DATE: 6/14/2011
 SCALE: 1"=200'
 TAX MAP #: 95-1-28.1
 DRAWN BY: JWV
 CHECKED BY: CPV
 FILE: 164207-01.dwg

 CHRISTINE P. VALACHOVIC
 NYS PLS #050368

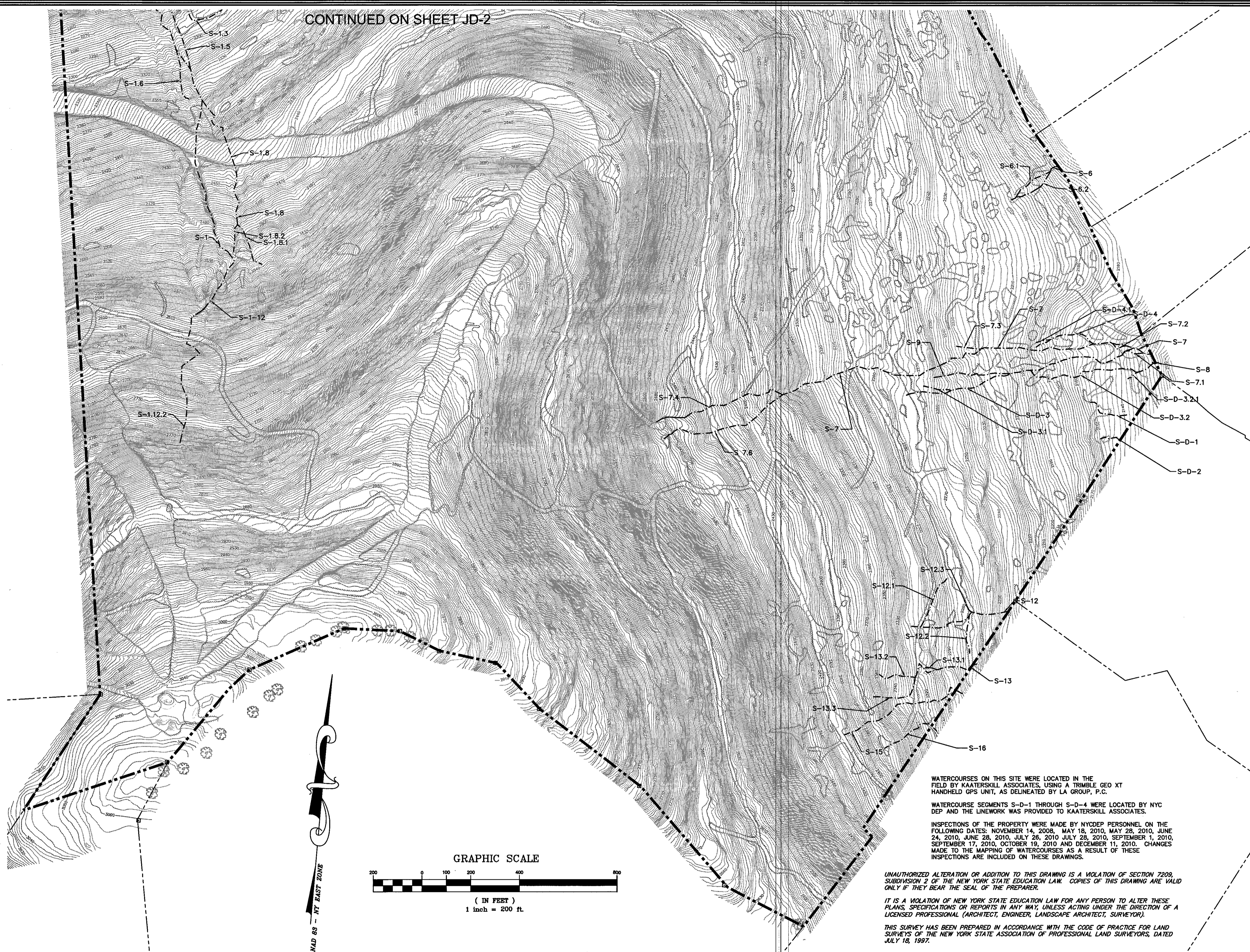
DRAWING: **JD-2**
 SHEET 2 of 3

LEGEND

- DENOTES IRON ROD SET (IRS)
- PROPERTY ANGLE
- IRON PIPE (IPF) OR IRON ROD (IRF) FOUND
- STONE ON END / ROCK PILE
- UTILITY POLE AND OVERHEAD UTILITY
- WIRE FENCE
- STONE WALL
- TREE WITH WIRE
- TREE WITH BLAZE &/OR PAINT
- TREE WITH FLAGGING
- DECIDUOUS TREE
- CONIFEROUS TREE
- ROCK OR BOULDER
- ROCK OUTCROP
- SNOWMAKING TOWER
- CHAIR LIFT TOWER
- WELL
- NYC DEP REGULATED WATERCOURSE

DELINEATED WATERCOURSES

DESIGNATION NUMBER	LENGTH	HYDROLOGICAL TYPE
S 1	2,938	Perennial
S 1.1	1,631	Intermittent
S 1.2	144	Intermittent
S 1.2.1	180	Intermittent
S 1.2.2	667	Intermittent
S 1.3	1,000	Intermittent
S 1.3.1	62	Intermittent
S 1.3.2	12	Intermittent
S 1.3.3	36	Intermittent
S 1.5	488	Intermittent
S 1.6	218	Intermittent
S 1.8	583	Perennial (?)
S 1.8.1	201	Intermittent
S 1.8.2	114	Intermittent
S 1.12	289	Perennial or Intermittent
S 1.12.2	646	Intermittent
S 3	63	Intermittent
S 3.1	766	Intermittent
S 3.1.2	729	Intermittent / ephemeral
S 3.1.3	529	Intermittent
S 3.2	694	Intermittent
S 6	44	Intermittent
S 6.1	204	Intermittent
S 6.2	187	Intermittent
S 7	1,614	Perennial in lower part, Intermittent in upper part
S 7.1	99	Intermittent
S 7.2	84	Intermittent
S 7.3	114	Intermittent
S 7.4	564	Intermittent
S 7.6	559	Intermittent
S 8	27	Intermittent
S 9	868	Intermittent
S 12	422	Intermittent
S 12.1	229	Intermittent
S 12.2	158	Intermittent
S 12.3	45	Intermittent
S 13	328	Intermittent
S 13.1	49	Intermittent
S 13.2	159	Intermittent
S 13.3	229	Intermittent
S 15	571	Intermittent
S 16	259	Intermittent
S-D 1	177	Intermittent
S-D 2	70	Intermittent
S-D 3	444	Intermittent
S-D 3.1	116	Intermittent
S-D 3.2	476	Intermittent
S-D 3.2.1	54	Intermittent
S-D 4	264	Intermittent
S-D 4.1	62	Intermittent
TOTAL LINEAR FEET OF WATER COURSE	20,464	



WATERCOURSES ON THIS SITE WERE LOCATED IN THE FIELD BY KAATERSKILL ASSOCIATES, USING A TRIMBLE GEO XT HANDHELD GPS UNIT, AS DELINEATED BY LA GROUP, P.C.

WATERCOURSE SEGMENTS S-D-1 THROUGH S-D-4 WERE LOCATED BY NYC DEP AND THE LINWORK WAS PROVIDED TO KAATERSKILL ASSOCIATES.

INSPECTIONS OF THE PROPERTY WERE MADE BY NYCDP PERSONNEL ON THE FOLLOWING DATES: NOVEMBER 14, 2008, MAY 18, 2010, MAY 28, 2010, JUNE 24, 2010, JUNE 28, 2010, JULY 28, 2010, JULY 28, 2010, SEPTEMBER 1, 2010, SEPTEMBER 17, 2010, OCTOBER 19, 2010 AND DECEMBER 11, 2010. CHANGES MADE TO THE MAPPING OF WATERCOURSES AS A RESULT OF THESE INSPECTIONS ARE INCLUDED ON THESE DRAWINGS.

UNAUTHORIZED ALTERATION OR ADDITION TO THIS DRAWING IS A VIOLATION OF SECTION 7209, SUBDIVISION 2 OF THE NEW YORK STATE EDUCATION LAW. COPIES OF THIS DRAWING ARE VALID ONLY IF THEY BEAR THE SEAL OF THE PREPARER.

IT IS A VIOLATION OF NEW YORK STATE EDUCATION LAW FOR ANY PERSON TO ALTER THESE PLANS, SPECIFICATIONS OR REPORTS IN ANY WAY, UNLESS ACTING UNDER THE DIRECTION OF A LICENSED PROFESSIONAL (ARCHITECT, ENGINEER, LANDSCAPE ARCHITECT, SURVEYOR).

THIS SURVEY HAS BEEN PREPARED IN ACCORDANCE WITH THE CODE OF PRACTICE FOR LAND SURVEYS OF THE NEW YORK STATE ASSOCIATION OF PROFESSIONAL LAND SURVEYORS, DATED JULY 18, 1997.

KAATERSKILL ASSOCIATES
 SURVEYORS, ARCHITECTS AND ENGINEERS
 CAIRO, NY (518)622-9667 CATSKILL, NY (518)943-1145 TANNERSVILLE, NY (518)589-3934

REV	DATE	REVISION SCALE AND NUMBER OF SHEETS DESCRIPTION	JWV APP.	TOWN OF WINDHAM
1	7/19/11			

WINDHAM MOUNTAIN SPORTING CLUB SITE
 OF LANDS OF
TUCK EASTSIDE PARTNERS, L.P.
 34 SALISBURY ROAD, DARIEN CT 06820
 OFF SOUTH STREET GREENE COUNTY, NY

NYC DEP REGULATED WATERCOURSE DELINEATION

PROJECT: 164207.01
 DATE: 6/14/2011
 SCALE: 1"=200'
 TAX MAP #: 95-1-28.1
 DRAWN BY: JWV
 CHECKED BY: CPV
 FILE: 164207-01.dwg

JD-3

SHEET 3 of 3



WATERCOURSE DELINEATION - LETTER OF ACCEPTANCE

November 23, 2011

*Carter H. Strickland, Jr.
Commissioner*

Mr. Kevin J. Franke
The LA Group, P.C.
40 Long Alley
Saratoga Springs, New York 12866

**Re: Windham Mountain Sporting Club
Watercourse Mapping
(T) Windham, Greene County
S/B/L 95.00-1-28.1**

Paul V. Rush, P.E.
Deputy Commissioner
Bureau of Water Supply
prush@dep.nyc.gov

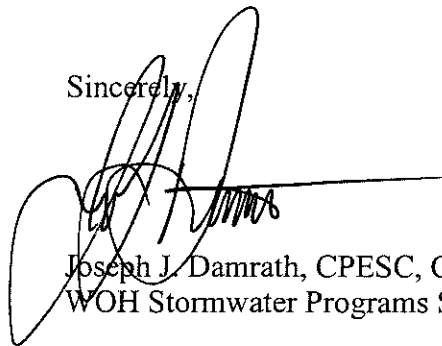
Dear Mr. Franke,

This office has reviewed the "DEP Regulated Watercourse Delineation Plans" for the Windham Mountain Sporting Club site as submitted by the LA Group on 9/16/11 and prepared by Kaaterskill Associates on 6/14/11, with revisions completed on 7/19/11, and confirms that the submitted mapping accurately represents the watercourse locations flagged on-site by New York City Department of Environmental Protection (DEP) personnel.

Please note that, pursuant to Section 18-23(b)(5) of the "Rules and Regulations for the Protection from Contamination, Degradation, and Pollution of the New York City Water Supply and its Sources" (Watershed Regulations), this survey map will be binding upon DEP until November 23, 2016.

If you have any questions regarding this Letter of Acceptance, please contact me at (845) 340-7234.

Sincerely,



Joseph J. Damrath, CPESC, CPSWQ, PWS
WOH Stormwater Programs Supervisor

WMSC_wc_accept1.doc