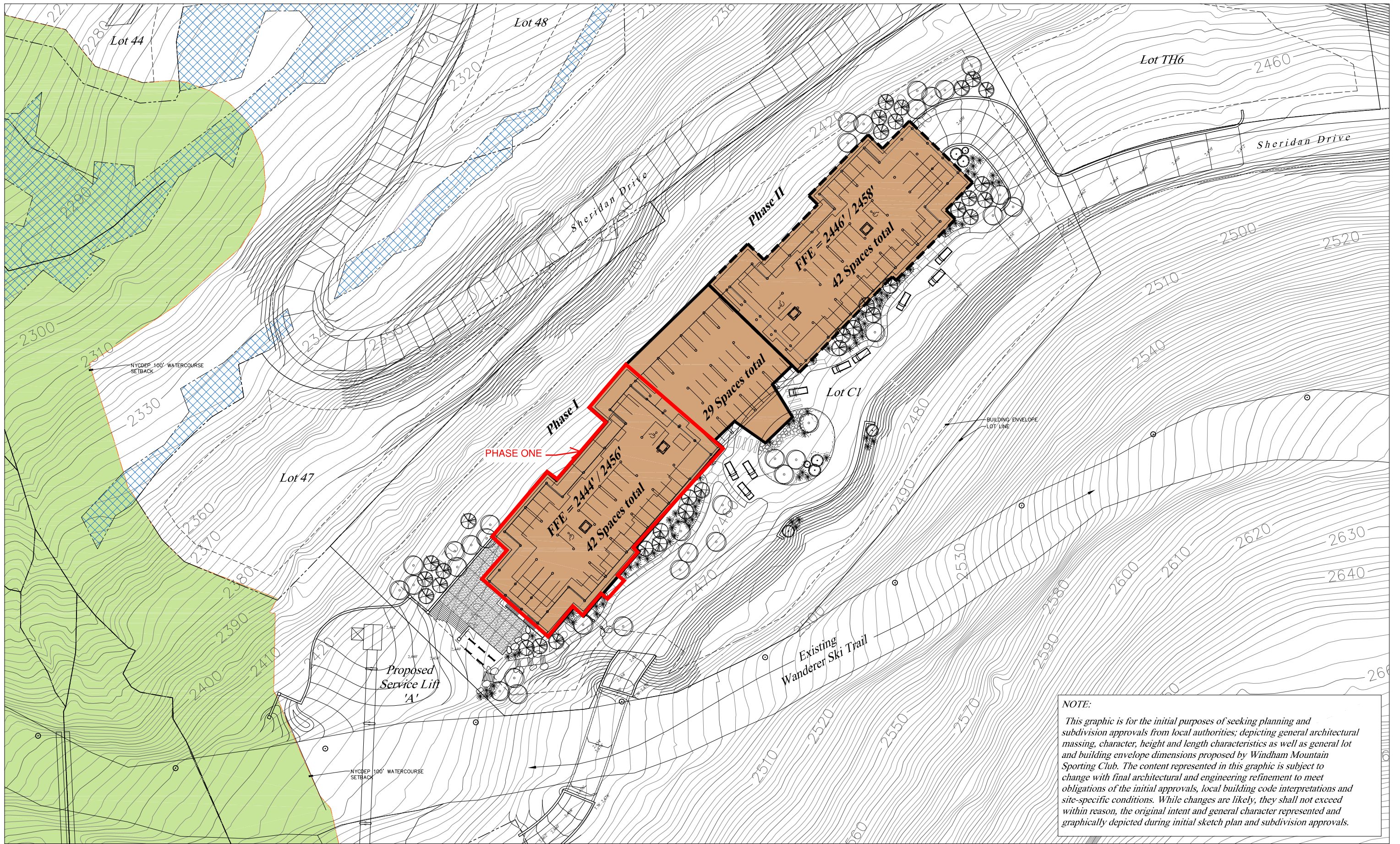


**APPENDIX 18**  
**BUILDING DRAWINGS**





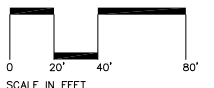
**NOTE:**

This graphic is for the initial purposes of seeking planning and subdivision approvals from local authorities; depicting general architectural massing, character, height and length characteristics as well as general lot and building envelope dimensions proposed by Windham Mountain Sporting Club. The content represented in this graphic is subject to change with final architectural and engineering refinement to meet obligations of the initial approvals, local building code interpretations and site-specific conditions. While changes are likely, they shall not exceed within reason, the original intent and general character represented and graphically depicted during initial sketch plan and subdivision approvals.

# The Windham Mountain Sporting Club

Tuck Eastside Partners, L.P.  
October 15, 2010

## Member's Lodge and Clubhouse Concept Plan - Lot C1





PHASE ONE

PHASE TWO



Porte Cochere

Entry Elevation

±628.5' BLDG ENVELOPE (LENGTH)



±79.5' BLDG ENVELOPE (HEIGHT)

Rear Elevation

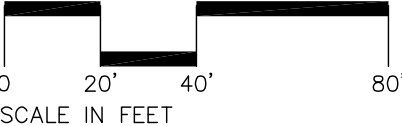
NOTE:

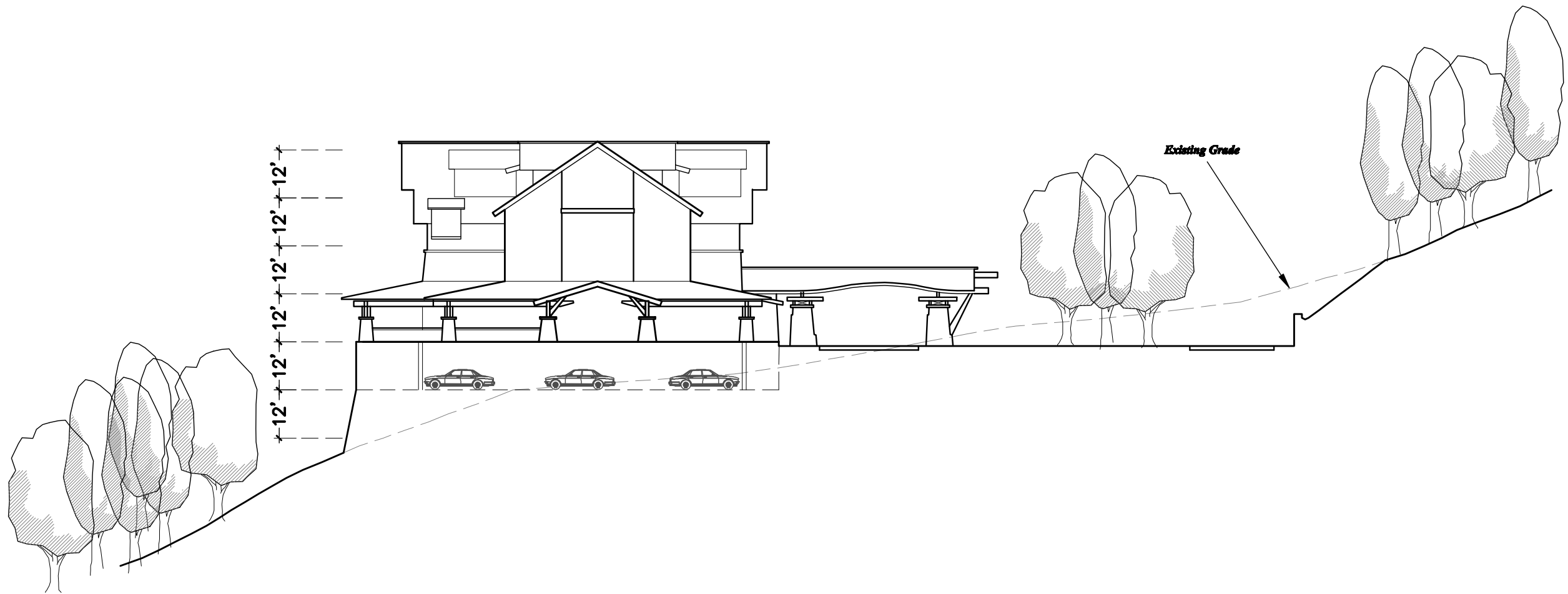
This graphic is for the initial purposes of seeking planning and subdivision approvals from local authorities; depicting general architectural massing, character, height and length characteristics as well as general lot and building envelope dimensions proposed by Windham Mountain Sporting Club. The content represented in this graphic is subject to change with final architectural and engineering refinement to meet obligations of the initial approvals, local building code interpretations and site-specific conditions. While changes are likely, they shall not exceed within reason, the original intent and general character represented and graphically depicted during initial sketch plan and subdivision approvals.

*The Windham Mountain Sporting Club*

Tuck Eastside Partners, L.P.  
October 27, 2009

*Member's Lodge and Clubhouse Concept - Lot C1*

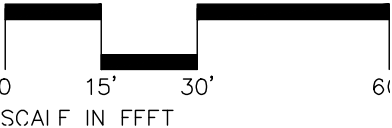




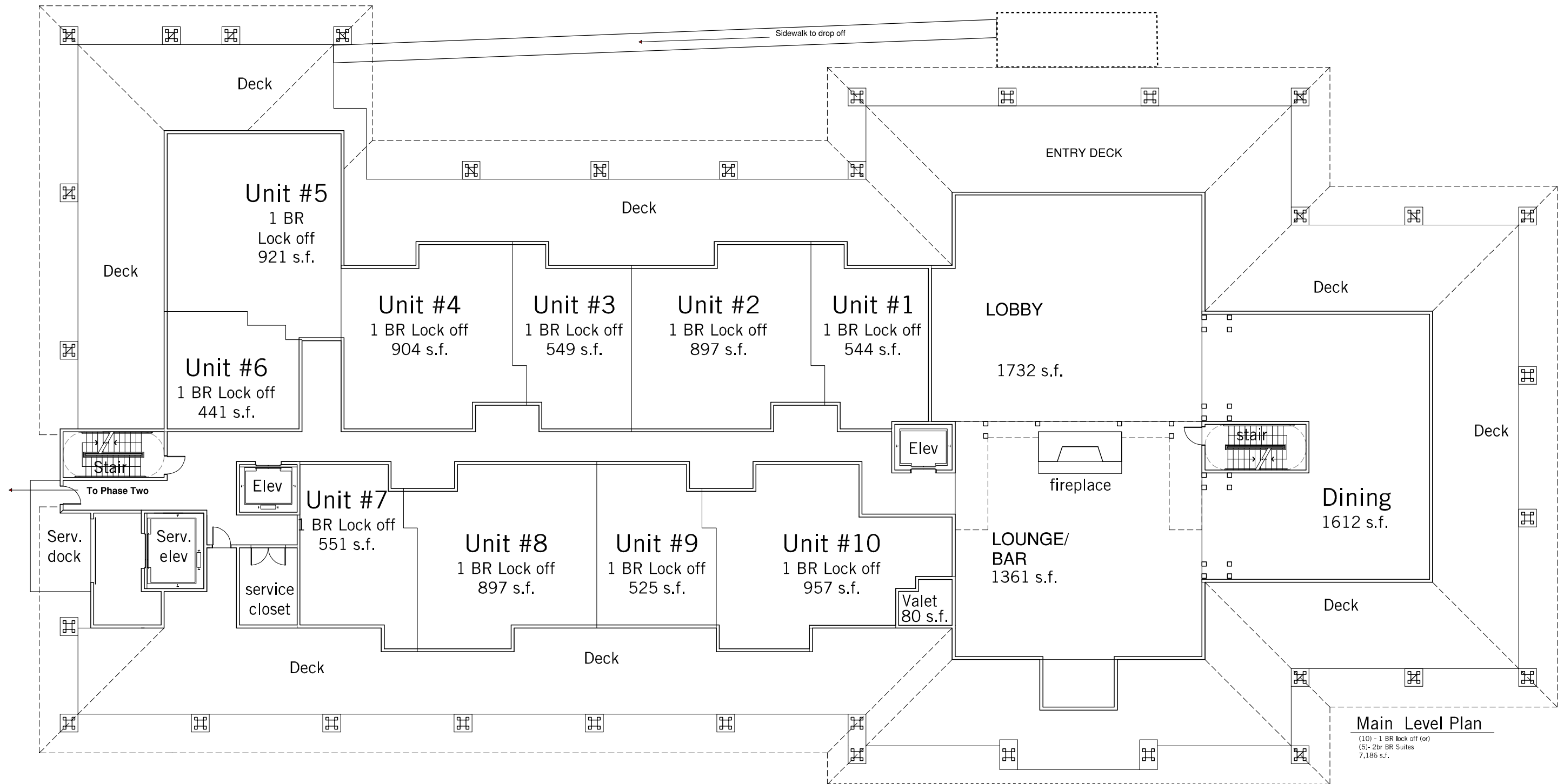
***The Windham Mountain Sporting Club***

*Tuck Eastside Partners, L.P.*  
*August 21, 2009*

***Member's Lodge Section Elevation Concept***

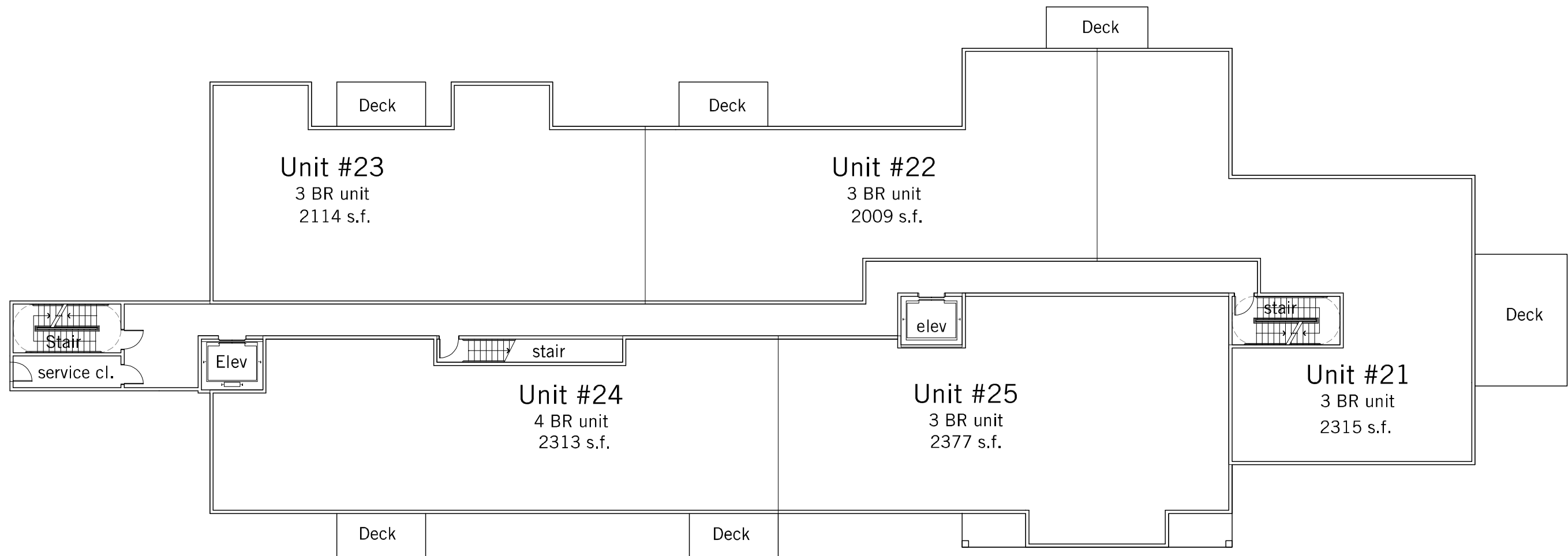






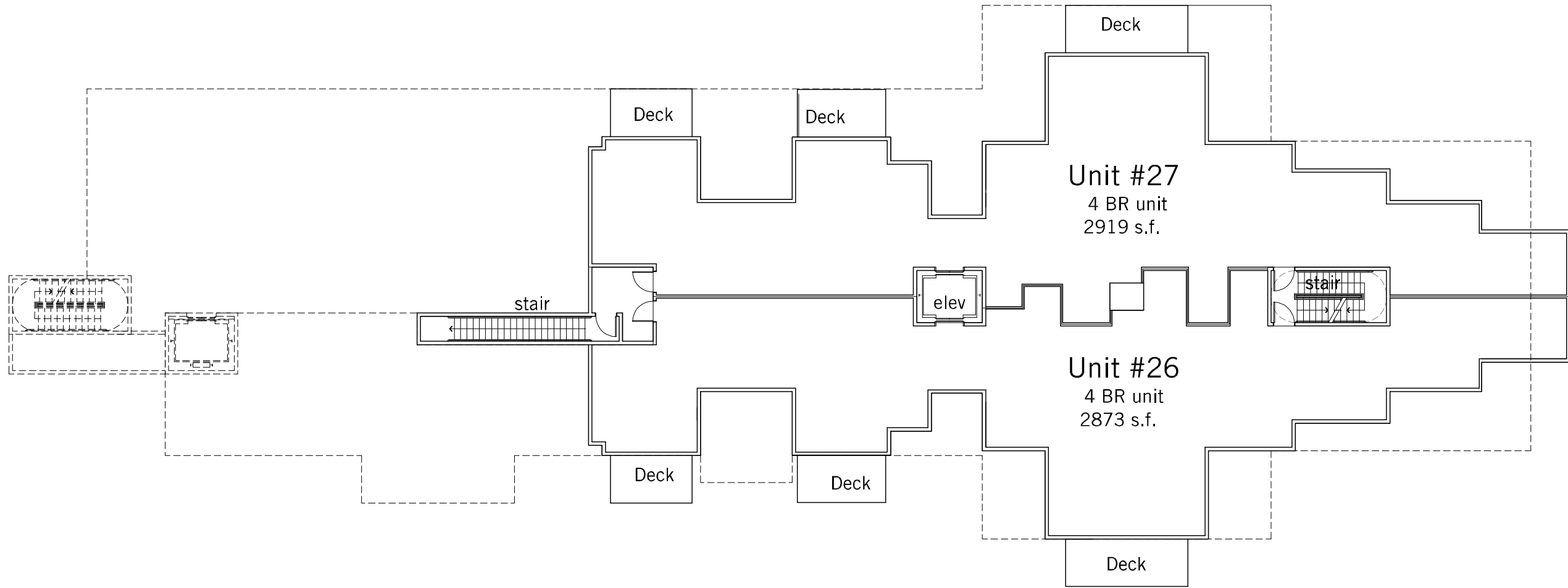






3rd Level Plan

(4) - 3 BR units  
(1) - 4 BR unit  
11,128 s.f.



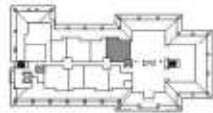
**4th Level Plan**

(2) - 4 BR units  
5,792 s.f.





LODGE UNIT 1  
1 BEDROOM LUGA UNIT  
355 S.F.



UNIT LOCATION PLAN  
WINDHAM MOUNTAIN  
SPORTING CLUB



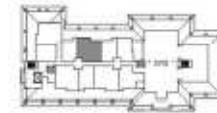
LODGE UNIT 2  
1 BEDROOM LUGA UNIT  
352 S.F.



UNIT LOCATION PLAN  
WINDHAM MOUNTAIN  
SPORTING CLUB



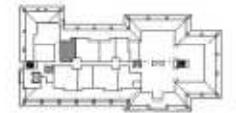
LODGE UNIT 3  
1 BEDROOM LUGA UNIT  
357 S.F.



UNIT LOCATION PLAN  
WINDHAM MOUNTAIN  
SPORTING CLUB



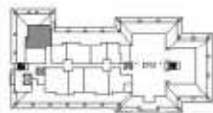
LODGE UNIT 4  
1 BEDROOM LUGA UNIT  
355 S.F.



UNIT LOCATION PLAN  
WINDHAM MOUNTAIN  
SPORTING CLUB



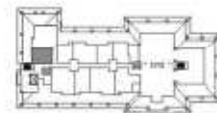
LODGE UNIT 5  
1 BEDROOM LUGA UNIT  
343 S.F.



UNIT LOCATION PLAN  
WINDHAM MOUNTAIN  
SPORTING CLUB



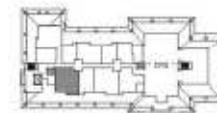
LODGE UNIT 6  
1 BEDROOM LUGA UNIT  
313 S.F.



UNIT LOCATION PLAN  
WINDHAM MOUNTAIN  
SPORTING CLUB



LODGE UNIT 7  
1 BEDROOM LUGA UNIT  
366 S.F.



UNIT LOCATION PLAN  
WINDHAM MOUNTAIN  
SPORTING CLUB



LODGE UNIT 8  
1 BEDROOM LUGA UNIT  
364 S.F.

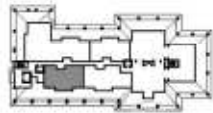


UNIT LOCATION PLAN  
WINDHAM MOUNTAIN  
SPORTING CLUB





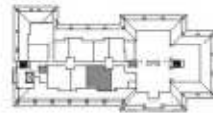
LODGE UNITS 7 & 8  
2 BEDROOM LOCK-OFF  
UNIT 7 - 508 S.F.  
UNIT 8 - 505 S.F.



UNIT LOCATION PLAN  
WINDHAM MOUNTAIN  
SPORTING CLUB



LODGE UNIT 9  
1 BEDROOM LOCK-OFF  
512 S.F.



UNIT LOCATION PLAN  
WINDHAM MOUNTAIN  
SPORTING CLUB



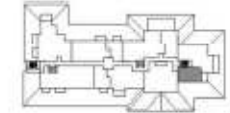
LODGE UNIT 10  
1 BEDROOM LOCK-OFF  
529 S.F.



UNIT LOCATION PLAN  
WINDHAM MOUNTAIN  
SPORTING CLUB



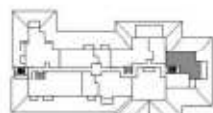
LODGE UNIT 11  
1 BEDROOM LOCK-OFF  
546 S.F.



UNIT LOCATION PLAN  
WINDHAM MOUNTAIN  
SPORTING CLUB



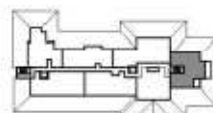
LODGE UNIT 12  
1 BEDROOM LOCK-OFF  
572 S.F.



UNIT LOCATION PLAN  
WINDHAM MOUNTAIN  
SPORTING CLUB



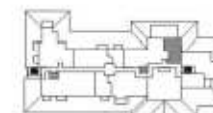
LODGE UNITS 11 & 12  
2 BEDROOM LOCK-OFF  
UNIT 11 - 546 S.F.  
UNIT 12 - 572 S.F.



UNIT LOCATION PLAN  
WINDHAM MOUNTAIN  
SPORTING CLUB



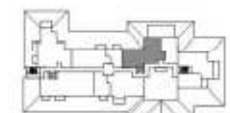
LODGE UNIT 13  
1 BEDROOM LOCK-OFF  
644 S.F.



UNIT LOCATION PLAN  
WINDHAM MOUNTAIN  
SPORTING CLUB



LODGE UNIT 14  
2 BEDROOM LOCK-OFF  
1545 S.F.



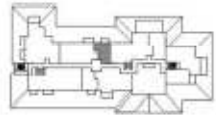
UNIT LOCATION PLAN  
WINDHAM MOUNTAIN  
SPORTING CLUB







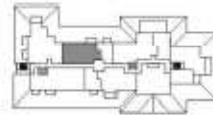
LODGE UNIT 15  
1 BEDROOM LOCK-OFF  
480 S.F.



UNIT LOCATION PLAN  
WINDHAM MOUNTAIN  
SPORTING CLUB



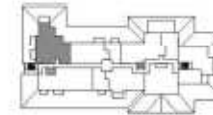
LODGE UNIT 16  
2 BEDROOM LOCK-OFF  
1,224 S.F.



UNIT LOCATION PLAN  
WINDHAM MOUNTAIN  
SPORTING CLUB



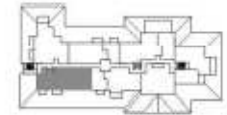
LODGE UNIT 17  
3 BEDROOM  
1,431 S.F.



UNIT LOCATION PLAN  
WINDHAM MOUNTAIN  
SPORTING CLUB



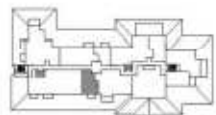
LODGE UNIT 18  
3 BEDROOM  
1,061 S.F.



UNIT LOCATION PLAN  
WINDHAM MOUNTAIN  
SPORTING CLUB



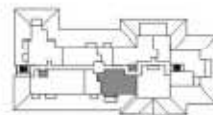
LODGE UNIT 19  
1 BEDROOM LOCK-OFF  
462 S.F.



UNIT LOCATION PLAN  
WINDHAM MOUNTAIN  
SPORTING CLUB



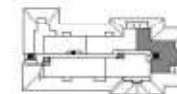
LODGE UNIT 20  
2 BEDROOM LOCK-OFF  
1,188 S.F.



UNIT LOCATION PLAN  
WINDHAM MOUNTAIN  
SPORTING CLUB



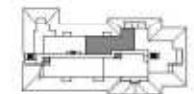
LODGE UNIT 21  
3 BEDROOM  
2,000 S.F.



UNIT LOCATION PLAN  
WINDHAM MOUNTAIN  
SPORTING CLUB



LODGE UNIT 22  
3 BEDROOM  
2,200 S.F.

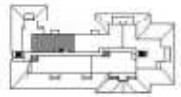


UNIT LOCATION PLAN  
WINDHAM MOUNTAIN  
SPORTING CLUB





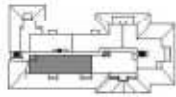
LODGE UNIT 23  
3 BEDROOM  
1744 S.F.



UNIT LOCATION PLAN  
WINDHAM MOUNTAIN  
SPORTING CLUB



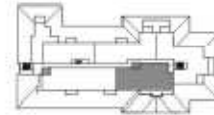
LODGE UNIT 24  
4 BEDROOM  
2540 S.F.



UNIT LOCATION PLAN  
WINDHAM MOUNTAIN  
SPORTING CLUB



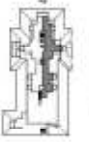
LODGE UNIT 25  
3 BEDROOM  
2045 S.F.



UNIT LOCATION PLAN  
WINDHAM MOUNTAIN  
SPORTING CLUB



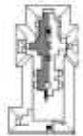
LODGE UNIT 26  
3 BEDROOM  
2045 S.F.



UNIT LOCATION PLAN  
WINDHAM MOUNTAIN  
SPORTING CLUB



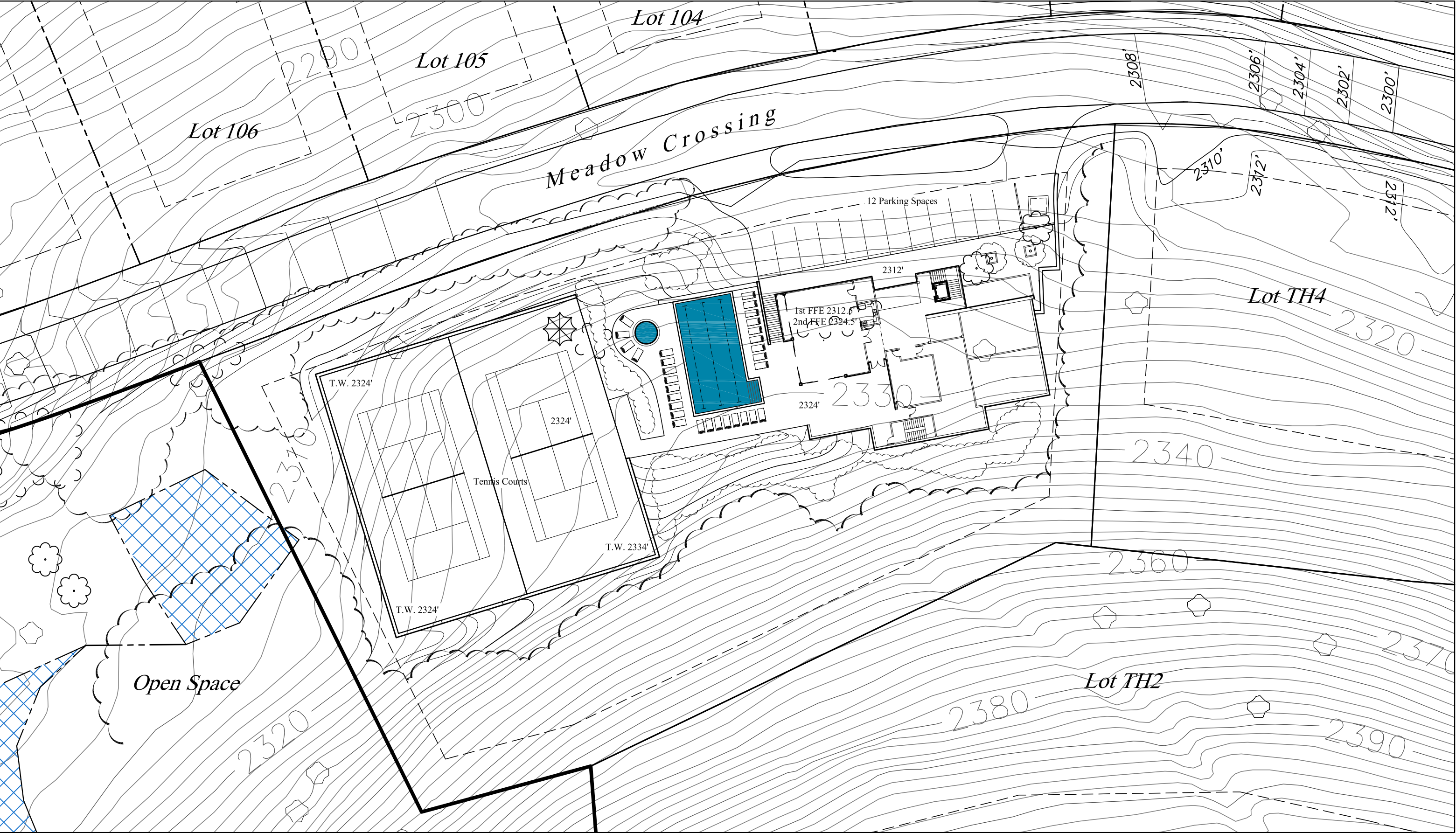
LODGE UNIT 27  
3 BEDROOM  
2045 S.F.



UNIT LOCATION PLAN  
WINDHAM MOUNTAIN  
SPORTING CLUB




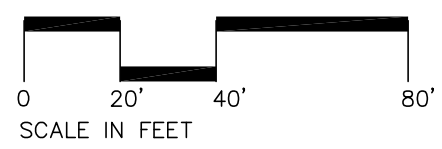




*The Windham Mountain Sporting Club* *Wellness Center Conceptual Site Layout*

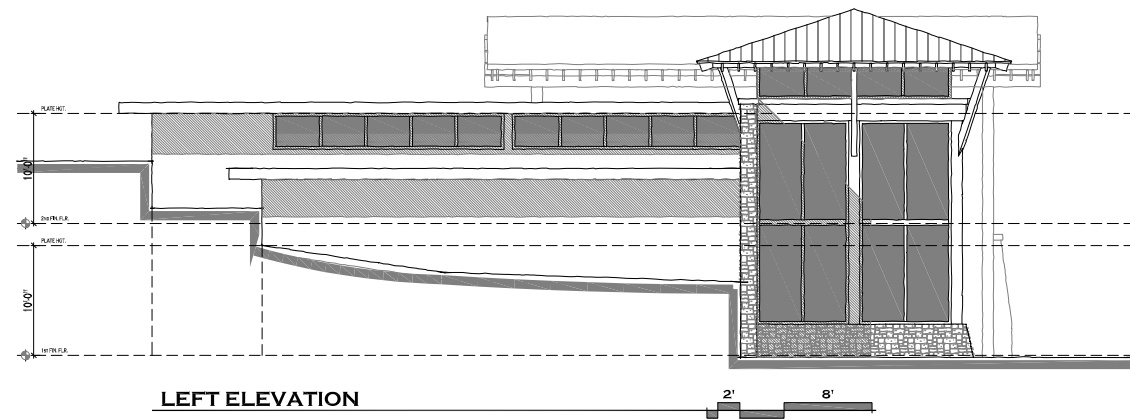
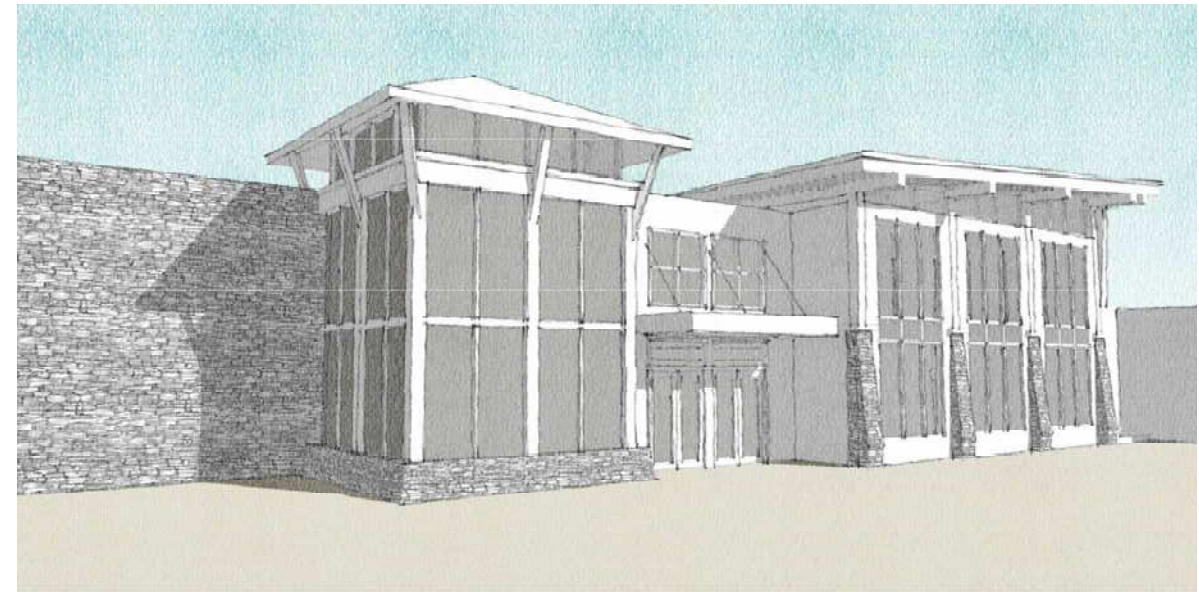
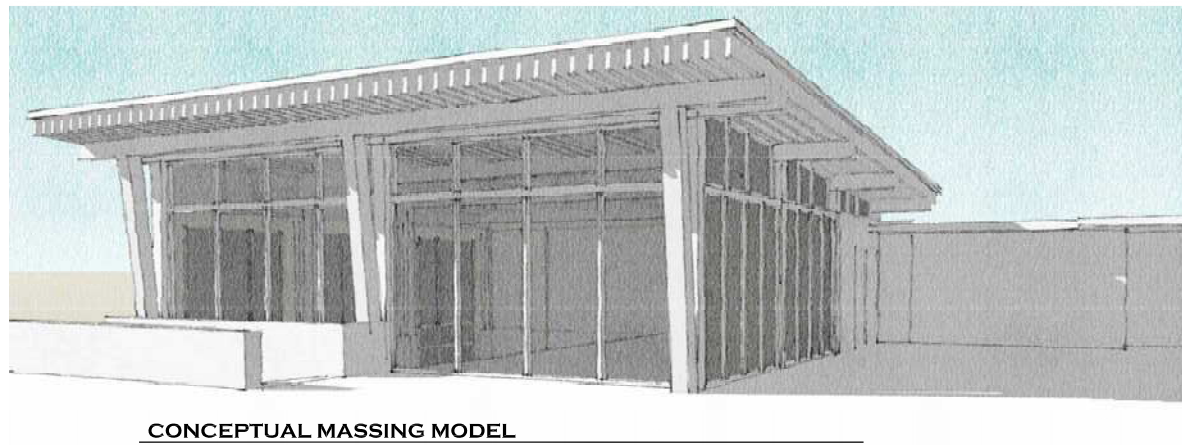
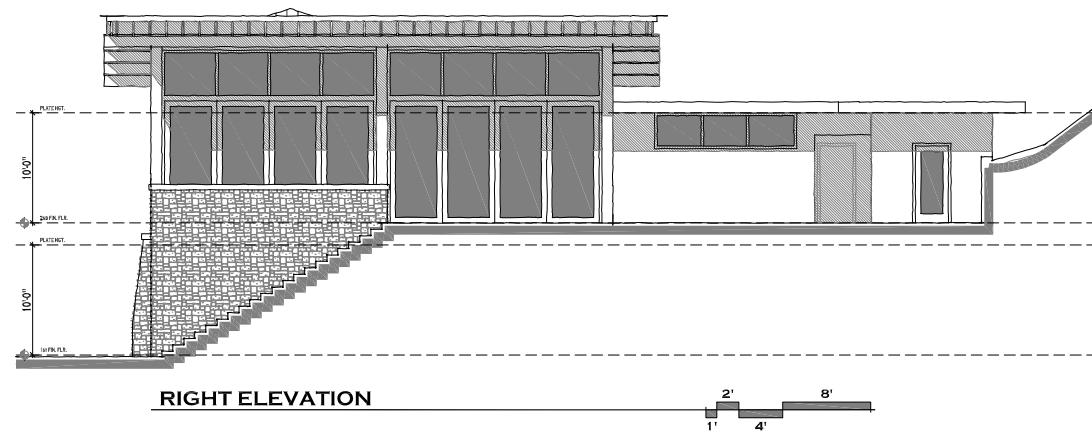
Tuck Eastside Partners, L.P.  
June 7, 2010

Design Management LLC

0 20' 40' 80'  
SCALE IN FEET

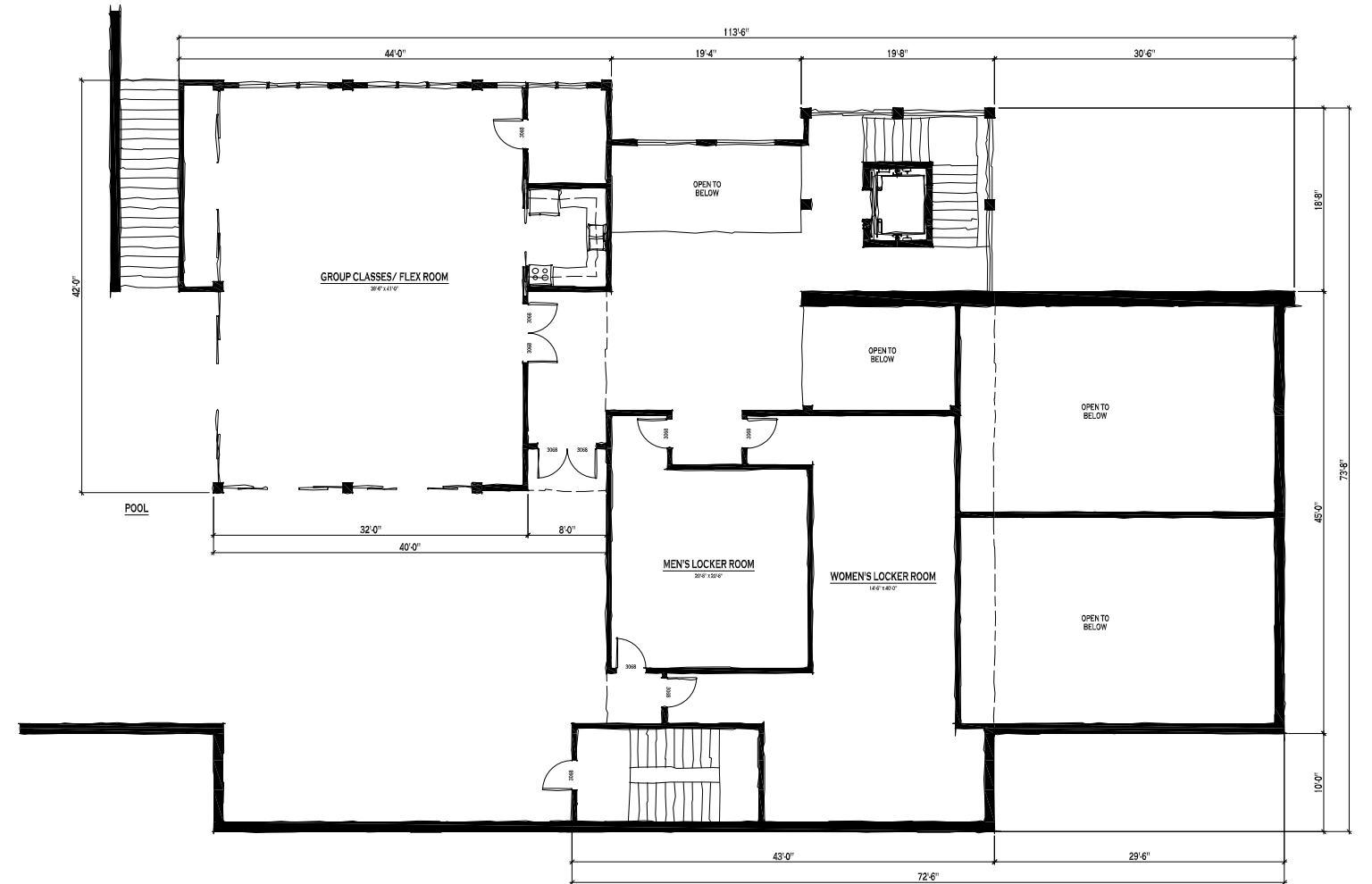
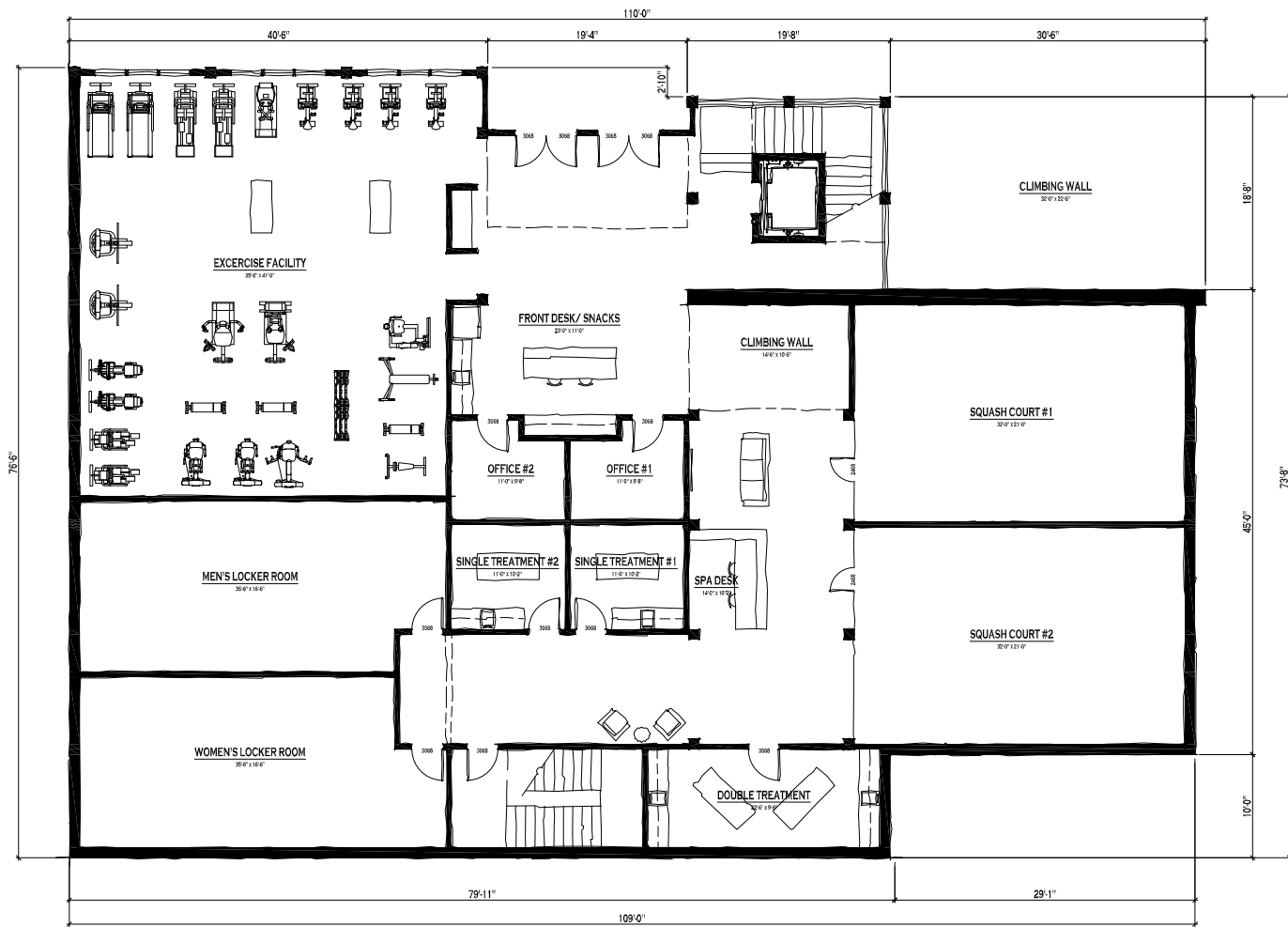




# **WINDHAM MOUNTAIN SPORTING CLUB WELLNESS CENTER ELEVATIONS**



**Design Management LLC**



## WINDHAM MOUNTAIN SPORTING CLUB WELLNESS CENTER PLANS



Design Management LLC



WWW.TADARCHITECTS.COM



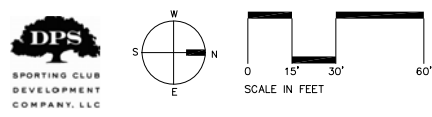


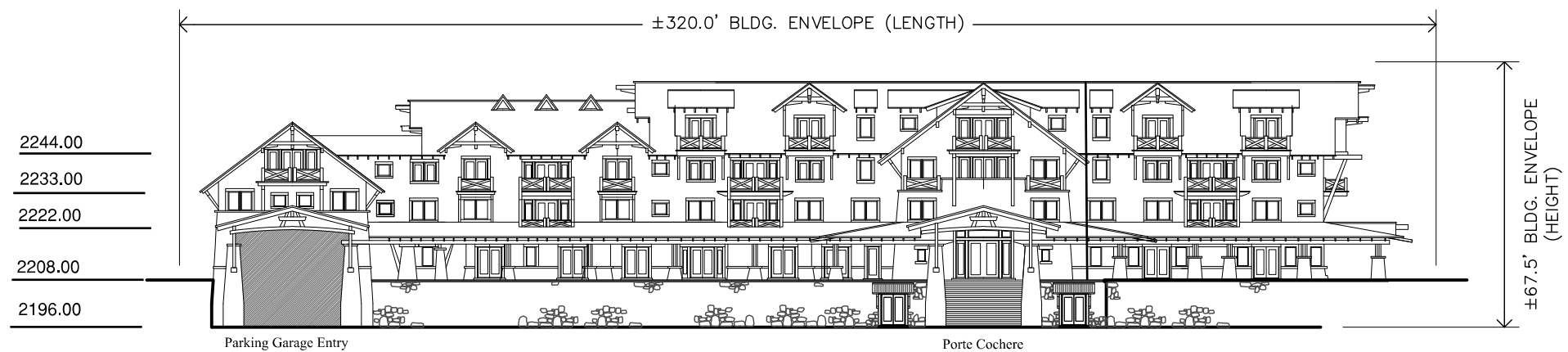
# The Windham Mountain Sporting Club

Tuck Eastside Partners, L.P.  
October 15, 2010

Design Management LLC

## East Bowl Condos Concept Plan - Lot C3





Entry Elevation



Rear Elevation

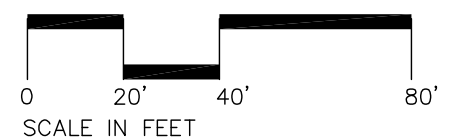
**NOTE:**  
 This graphic is for the initial purposes of seeking planning and subdivision approvals from local authorities; depicting general architectural massing, character, height and length characteristics as well as general lot and building envelope dimensions proposed by Windham Mountain Sporting Club. The content represented in this graphic is subject to change with final architectural and engineering refinement to meet obligations of the initial approvals, local building code interpretations and site-specific conditions. While changes are likely, they shall not exceed within reason, the original intent and general character represented and graphically depicted during initial sketch plan and subdivision approvals.

## The Windham Mountain Sporting Club

Tuck Eastside Partners, L.P.  
 October 15, 2010

Design Management LLC

## East Lodge Concept - Lot C3



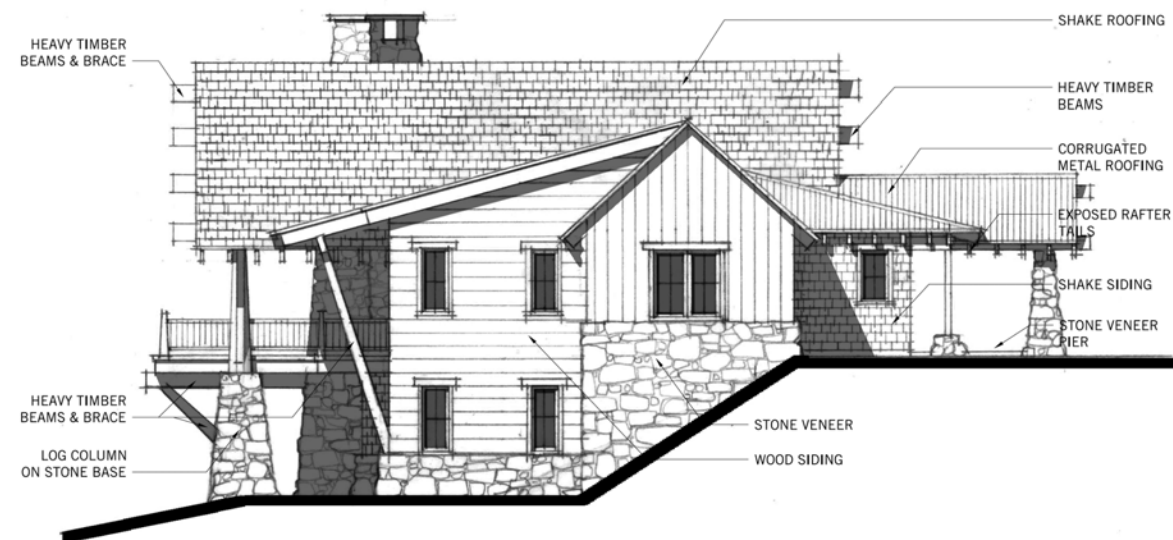




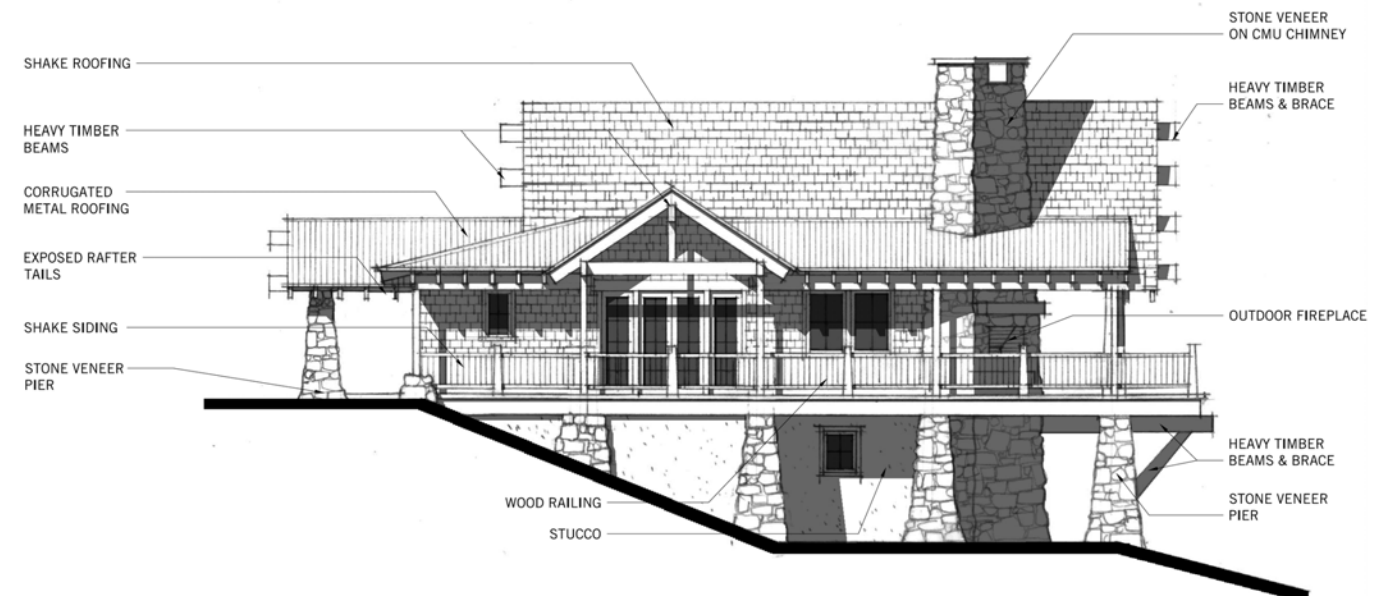
**FRONT ELEVATION**  
NOT TO SCALE



**REAR ELEVATION**  
NOT TO SCALE



**SIDE A ELEVATION**  
NOT TO SCALE



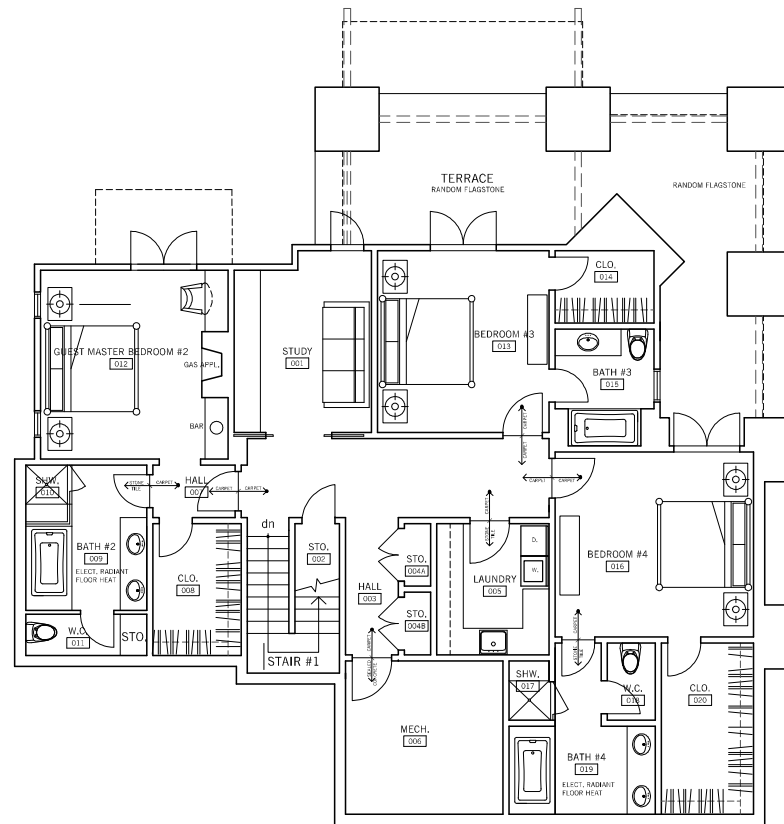
**SIDE B ELEVATION**  
NOT TO SCALE

**WINDHAM MOUNTAIN CLUB** Green County, New York

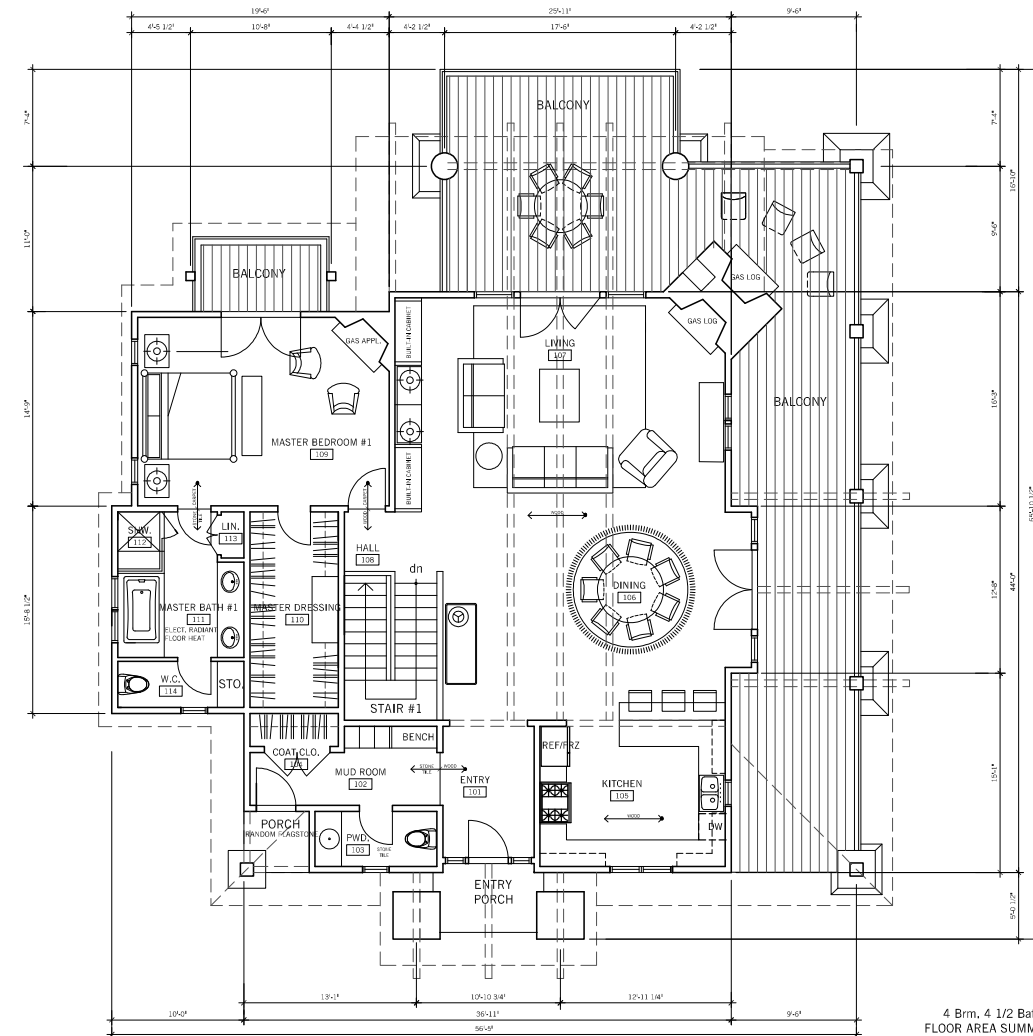
Tuck Eastside Partners, L.P.  
October 15, 2010

Single Family Detached Architectural Concept





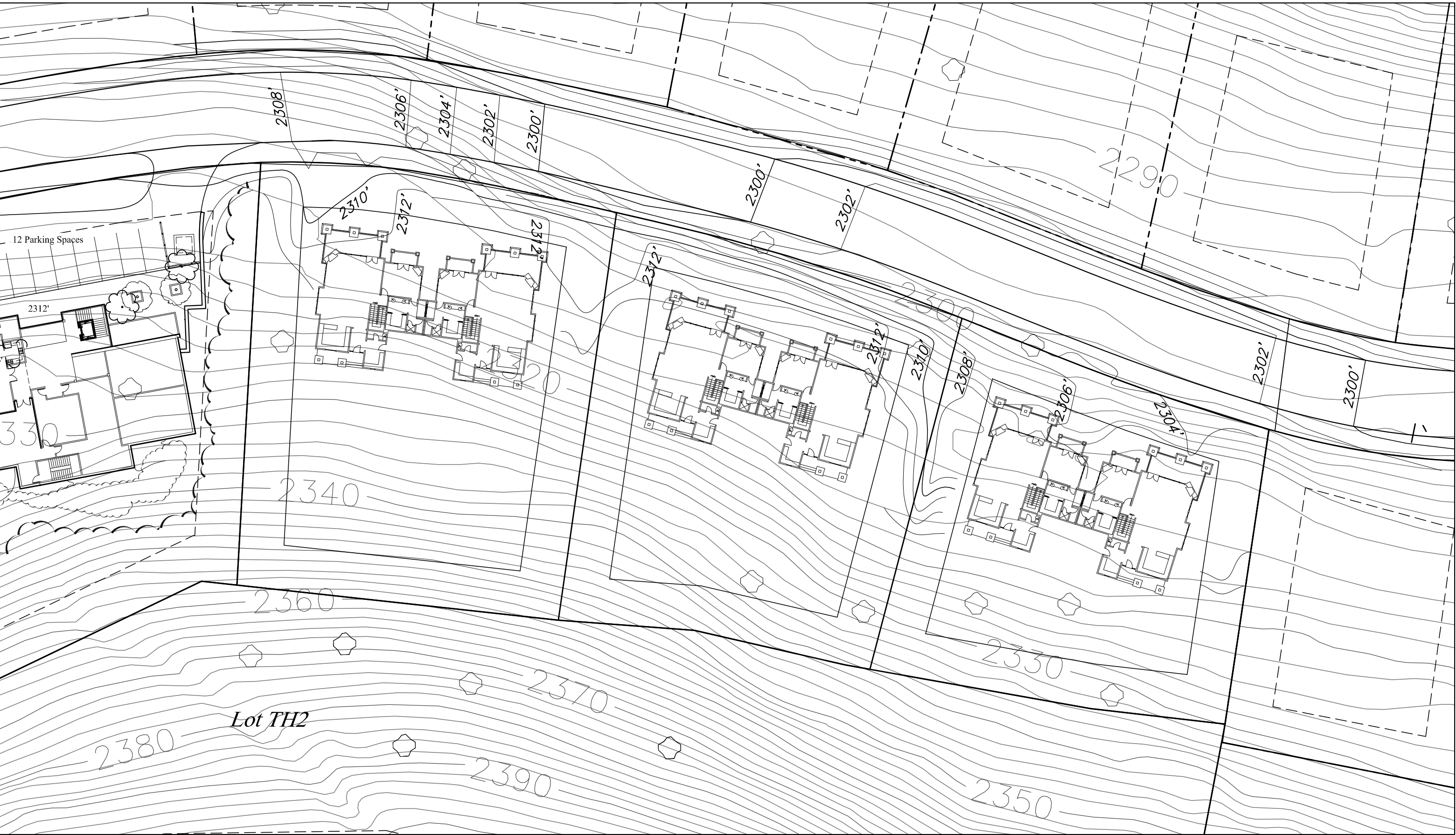
**COTTAGE LOWER LEVEL PLAN**  
NOT TO SCALE



**COTTAGE MAIN LEVEL FLOOR PLAN**  
NOT TO SCALE

4 Brm, 4 1/2 Bath  
FLOOR AREA SUMMARY  
Main Level 1,830  
Lower Level 2,061  
House Total 3,891 s.f.  
Main Level Balcony 140 s.f.

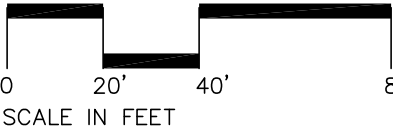


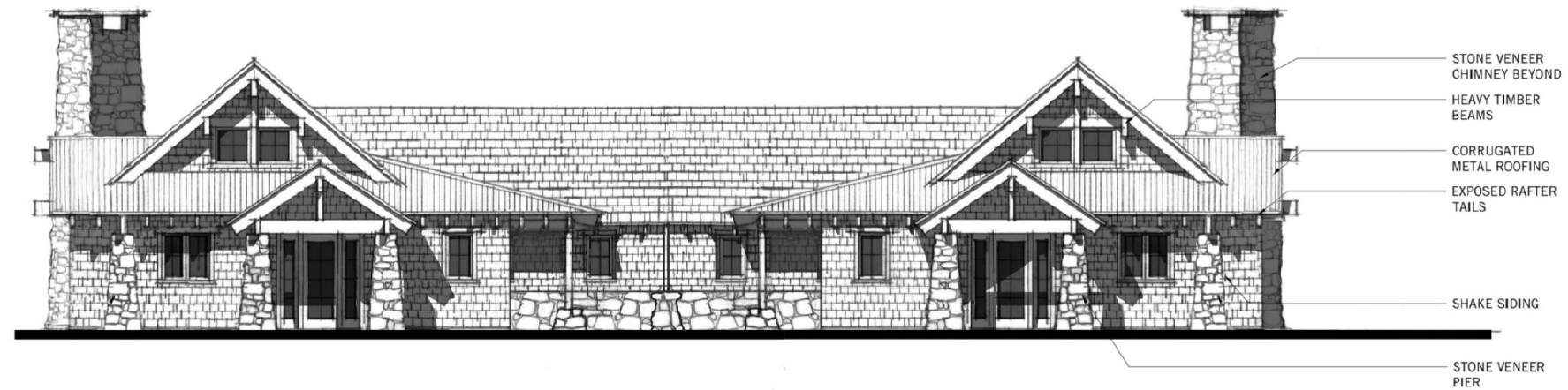


*The Windham Mountain Sporting Club*

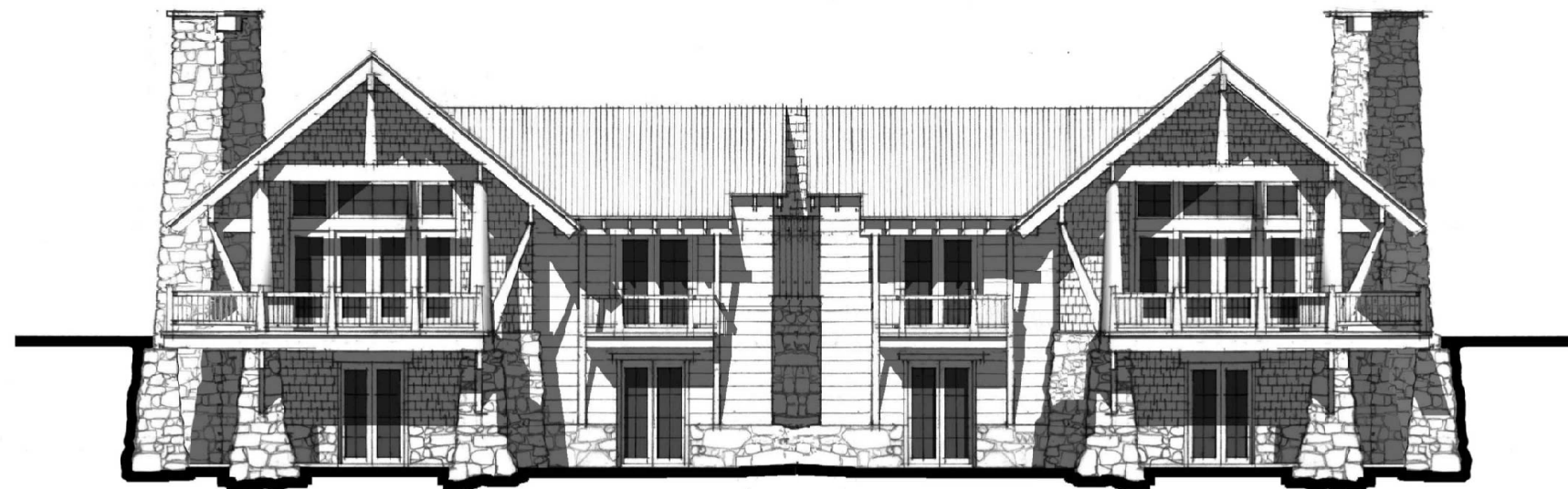
*Townhome Lot 4 Duplex Conceptual Lotting Plan*

Tuck Eastside Partners, L.P.  
June 25, 2010





**FRONT ELEVATION**  
NOT TO SCALE

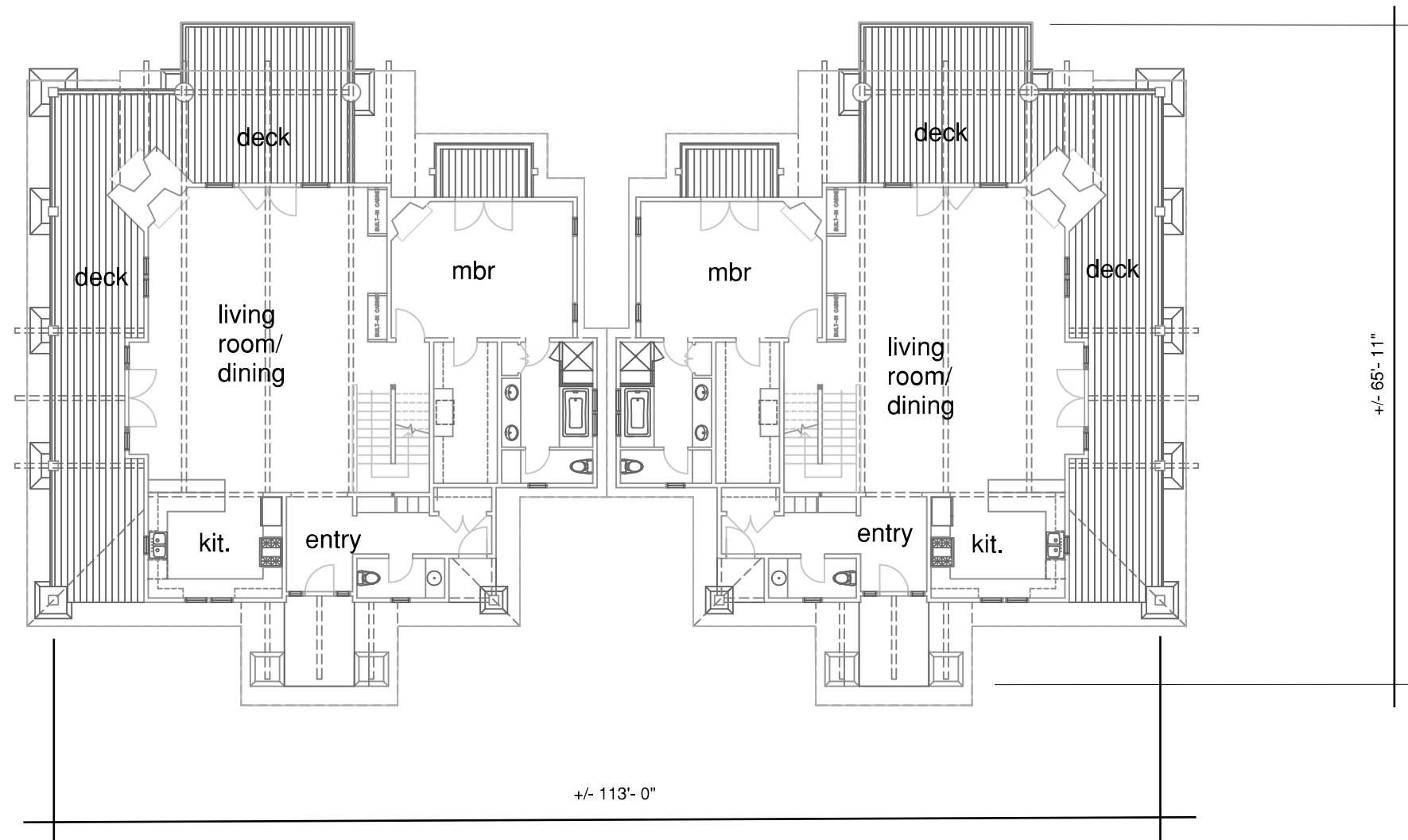


**REAR ELEVATION**  
NOT TO SCALE

**WINDHAM MOUNTAIN CLUB** *Green County, New York*

*Tuck Eastside Partners, L.P.*  
October 15, 2010

*Single Family Duplex Architectural Concept*

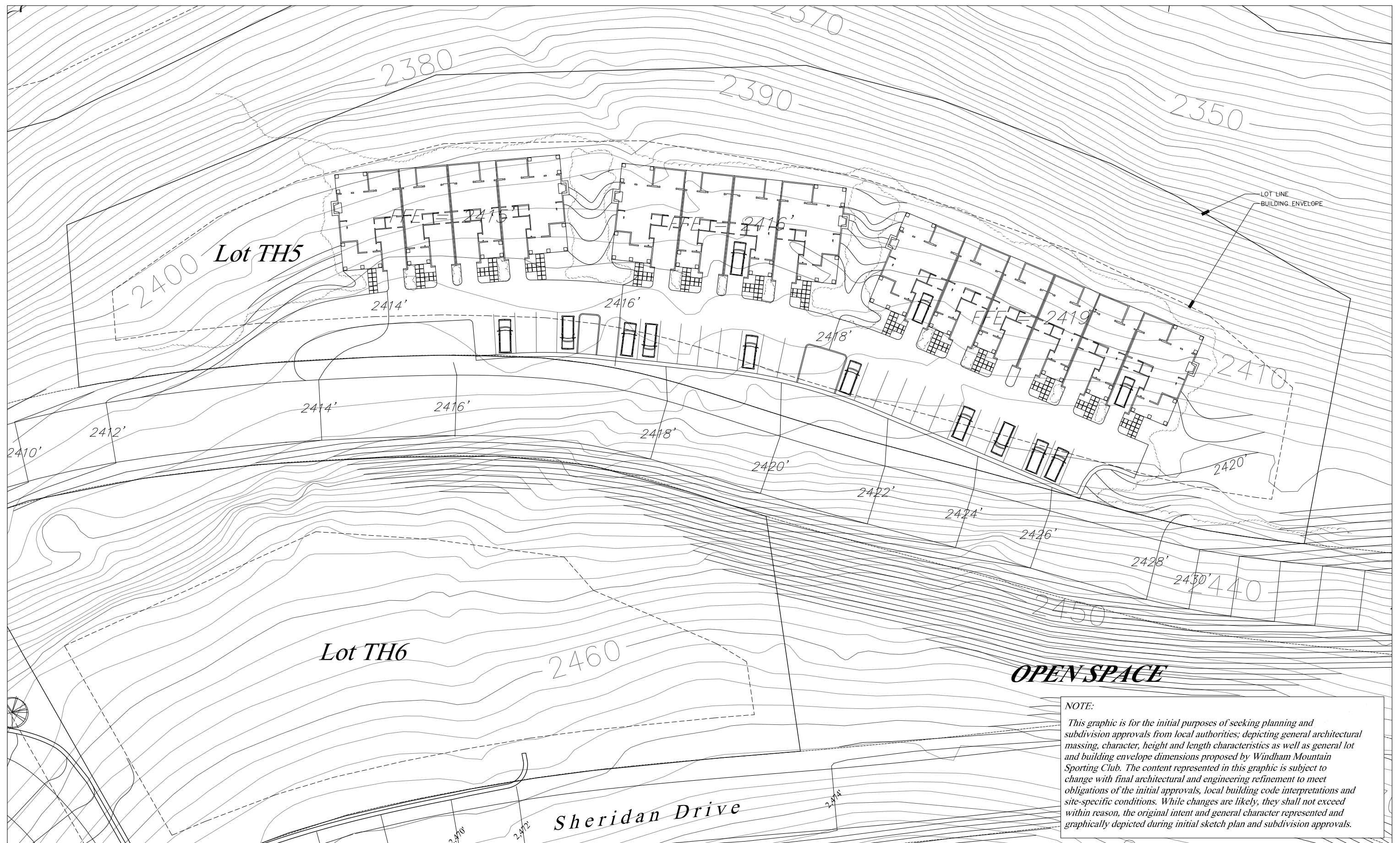


## WINDHAM MOUNTAIN SPORTING CLUB

POSS ARCHITECTS- DESIGN MANAGEMENT LLC

## CONCEPTUAL FLOOR PLAN- ENTRY LEVEL

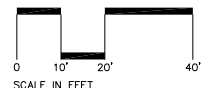
NOT TO SCALE



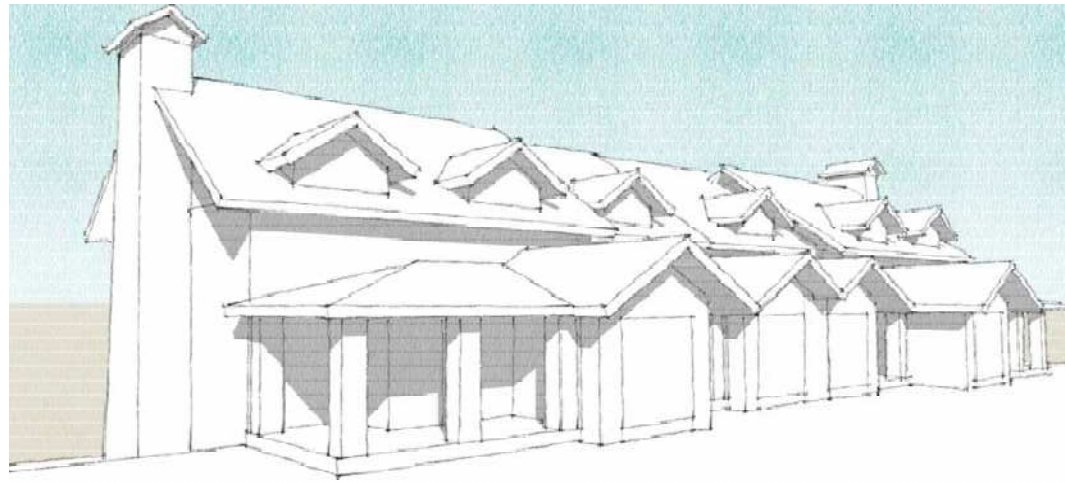
# *The Windham Mountain Sporting Club*

Tuck Eastside Partners, L.P.  
 October 15, 2010  
 Design Management LLC

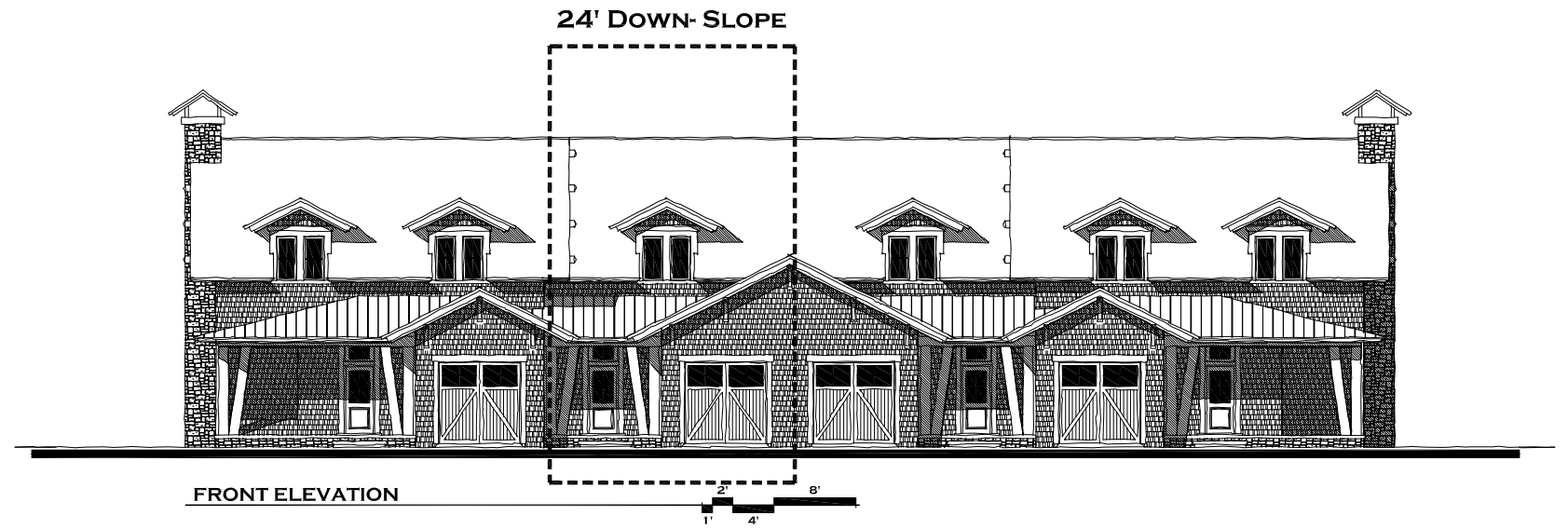
*Typical downhill Townhome site plan concept - Lot TH5*



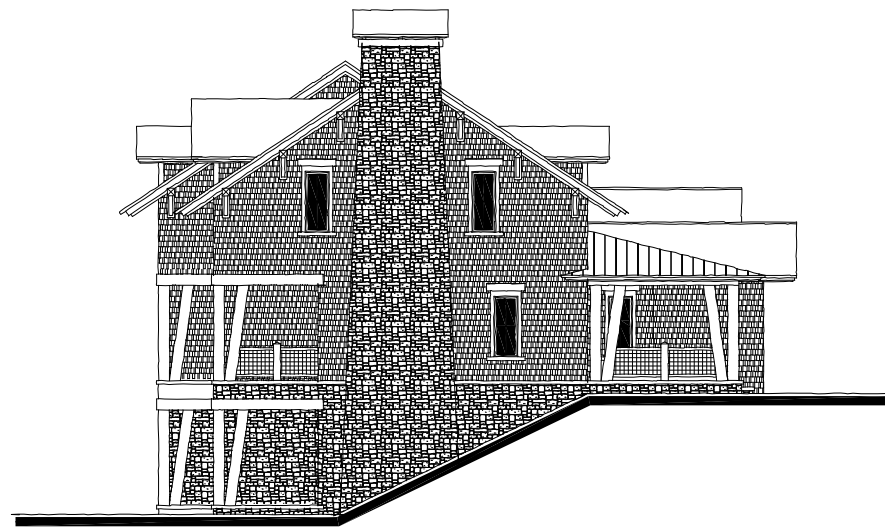




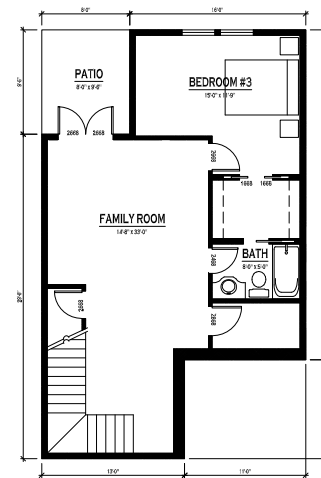
CONCEPTUAL MASSING MODEL



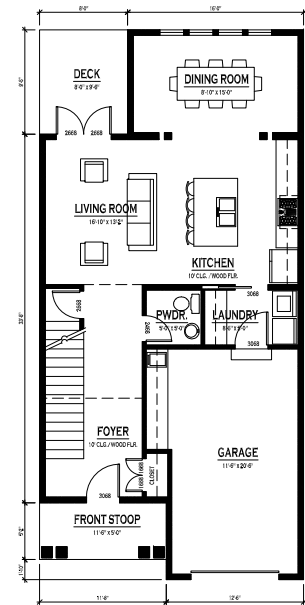
FRONT ELEVATION



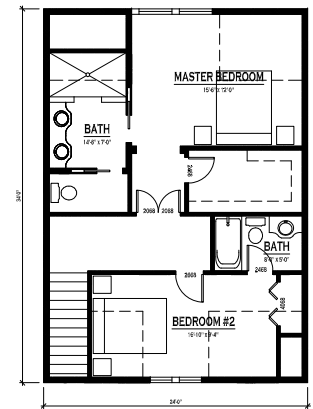
SIDE ELEVATION



BASEMENT PLAN  
840 SQ. FT. (HEATED)



FIRST FLOOR PLAN  
770 SQ. FT. (HEATED)



SECOND FLOOR PLAN  
620 SQ. FT. (HEATED)



REAR ELEVATION

# WINDHAM MOUNTAIN SPORTING CLUB TOWN HOMES 24' DOWN-SLOPE

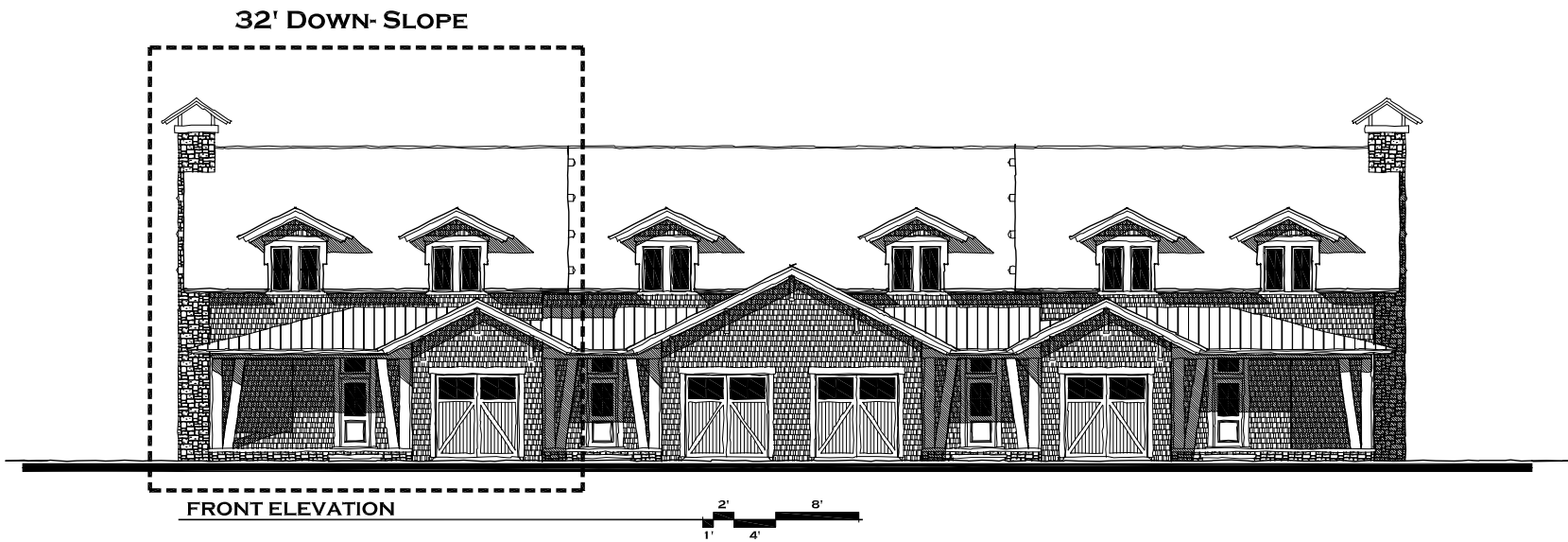


Design Management LLC

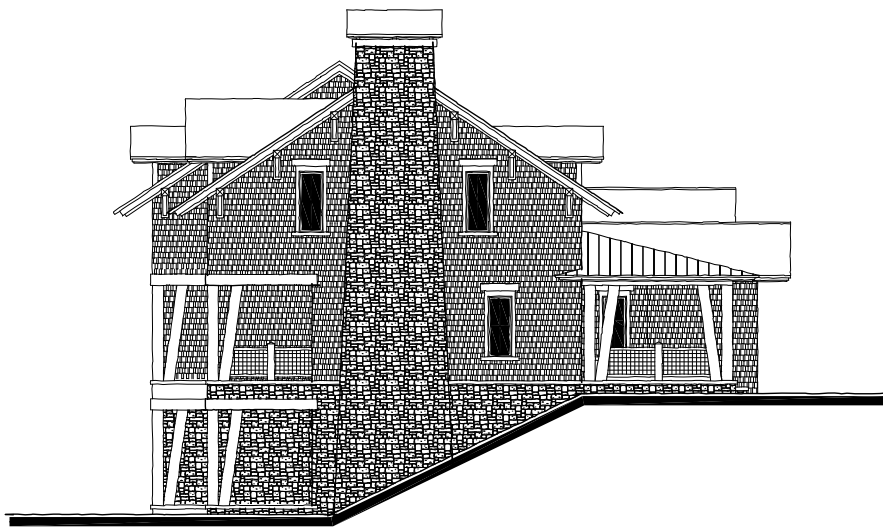




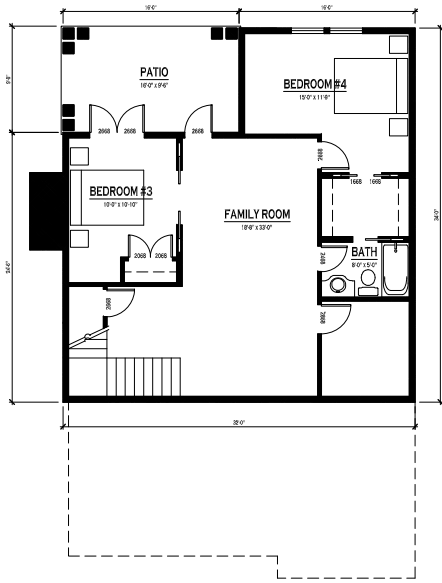
CONCEPTUAL MASSING MODEL



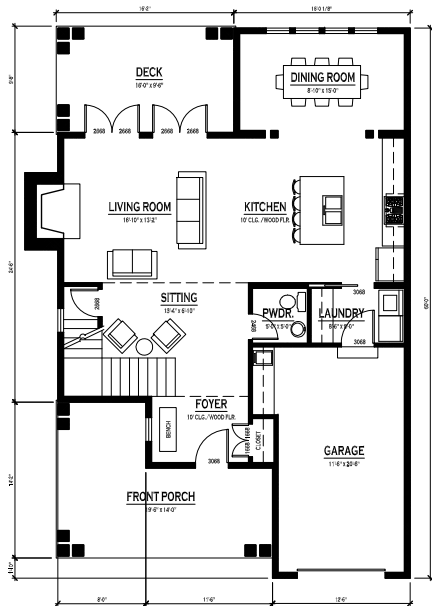
FRONT ELEVATION



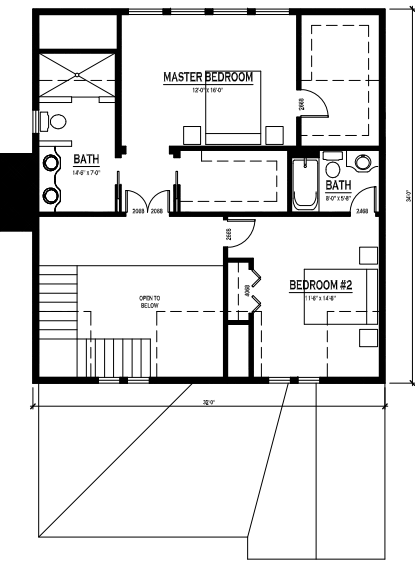
SIDE ELEVATION



BASEMENT PLAN  
1,110 SQ. FT. (HEATED)



FIRST FLOOR PLAN  
1,230 SQ. FT. (HEATED)



SECOND FLOOR PLAN  
1,110 SQ. FT. (HEATED)



REAR ELEVATION

# WINDHAM MOUNTAIN SPORTING CLUB TOWN HOMES 32' DOWN-SLOPE



Design Management LLC



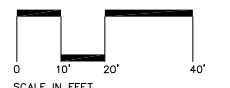


# *The Windham Mountain Sporting Club*

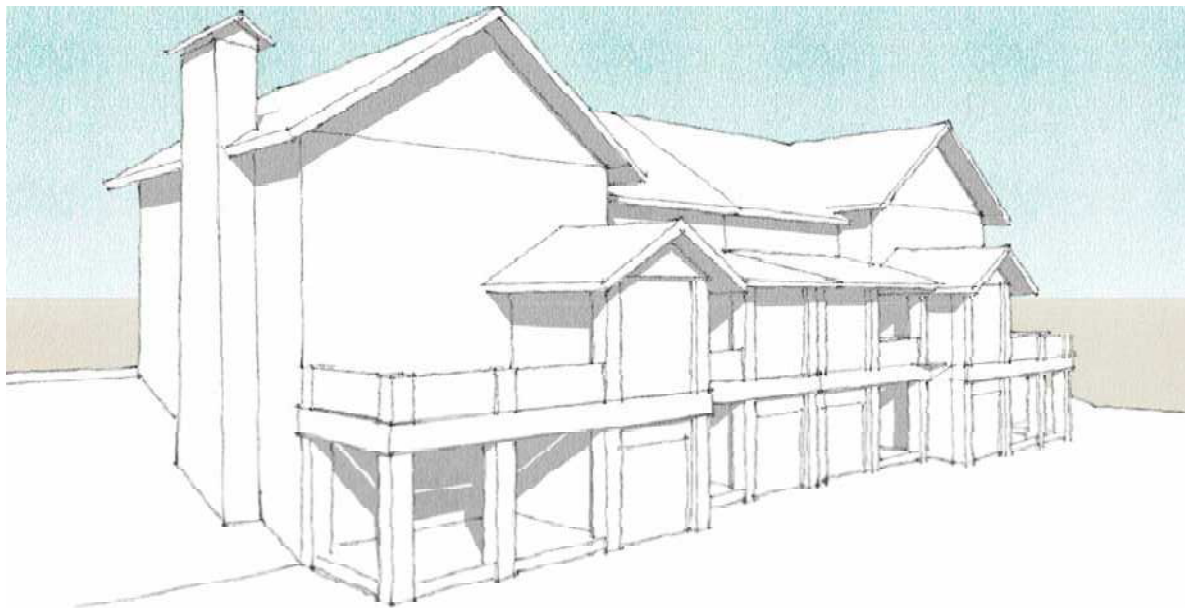
Tuck Eastside Partners, L.P.  
October 15, 2010

Design Management LLC

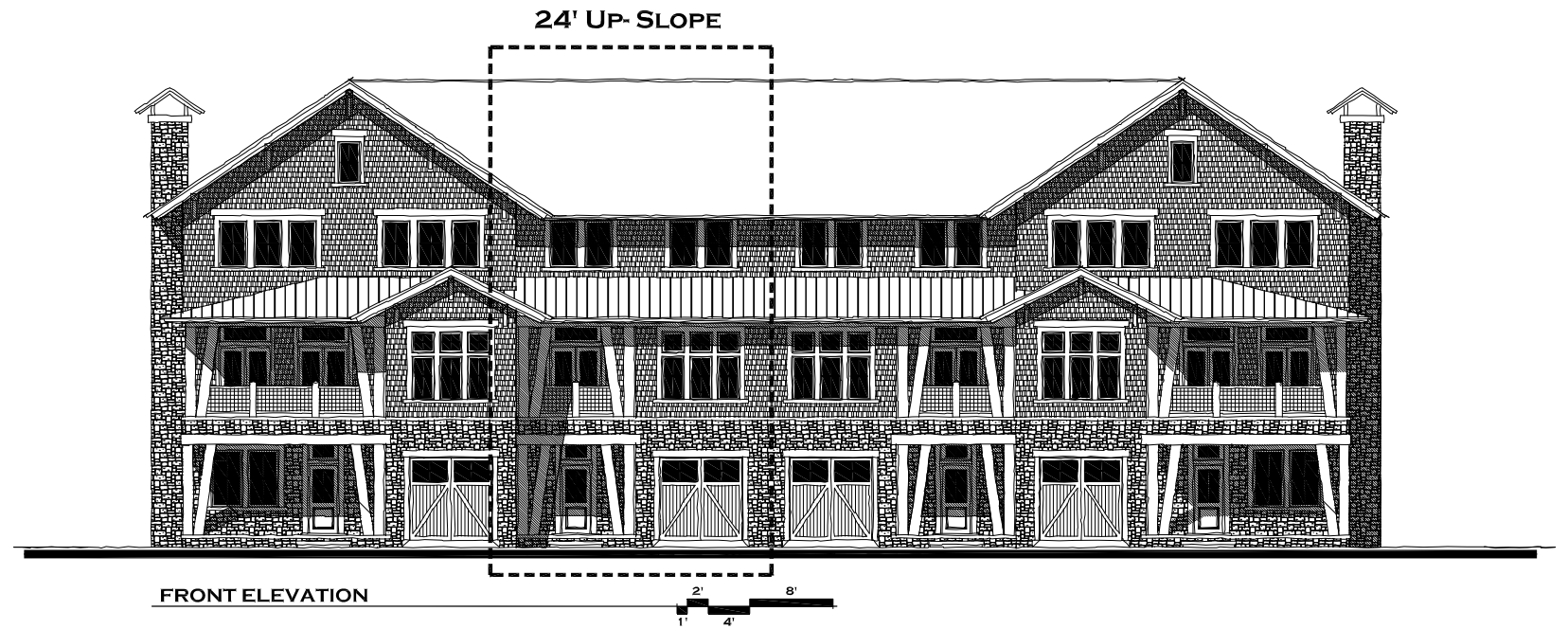
*Typical uphill Townhome site plan concept - Lot TH4*



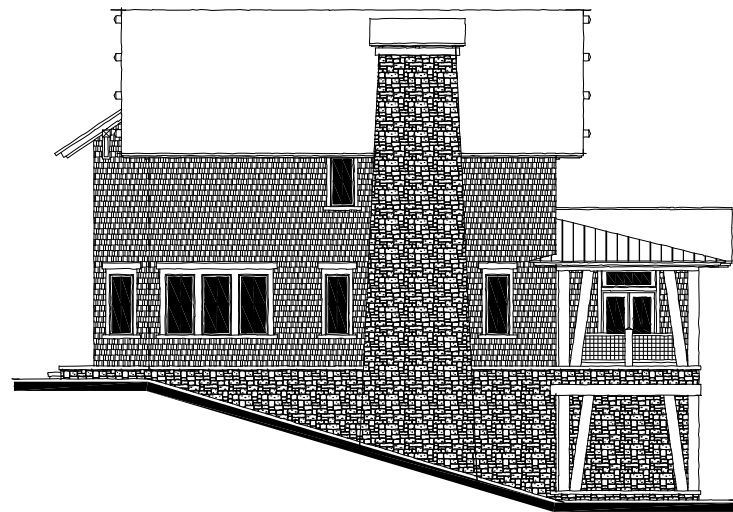




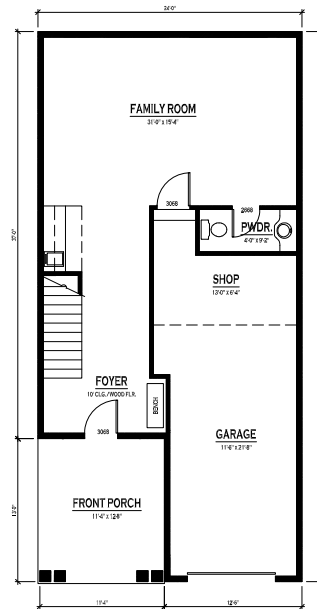
CONCEPTUAL MASSING MODEL



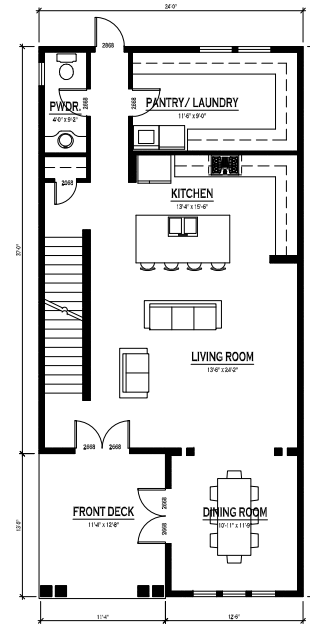
FRONT ELEVATION



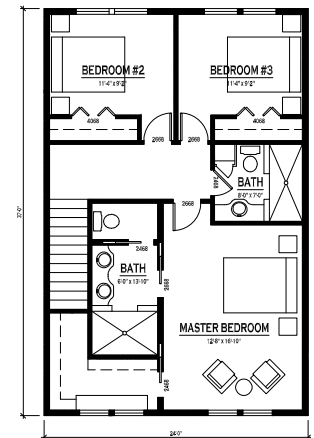
SIDE ELEVATION



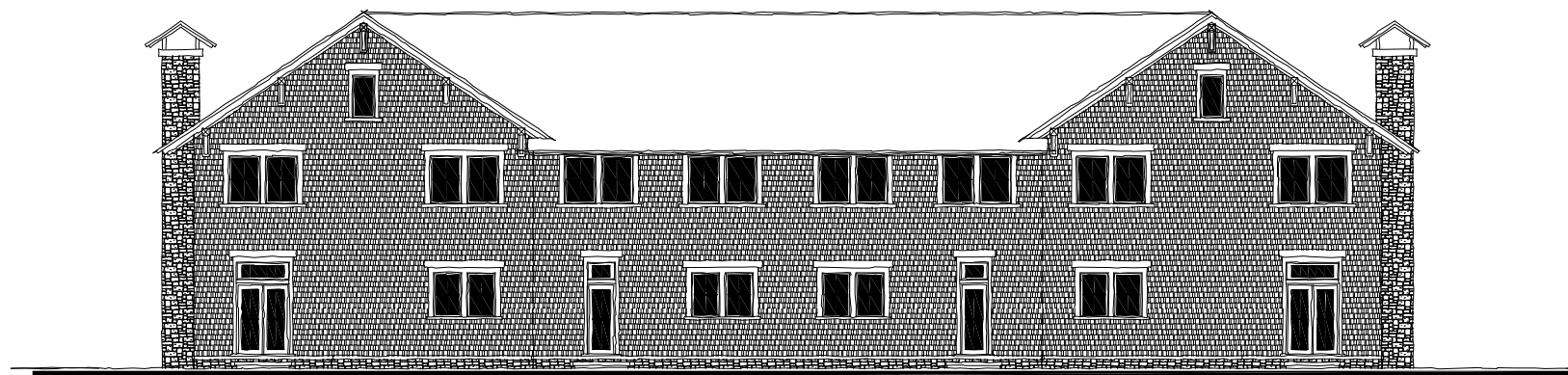
**BASEMENT PLAN**  
655 SQ. FT. (HEATED)



**FIRST FLOOR PLAN**  
1,040 SQ. FT. (HEATED)



**SECOND FLOOR PLAN**  
1,040 SQ. FT. (HEATED)



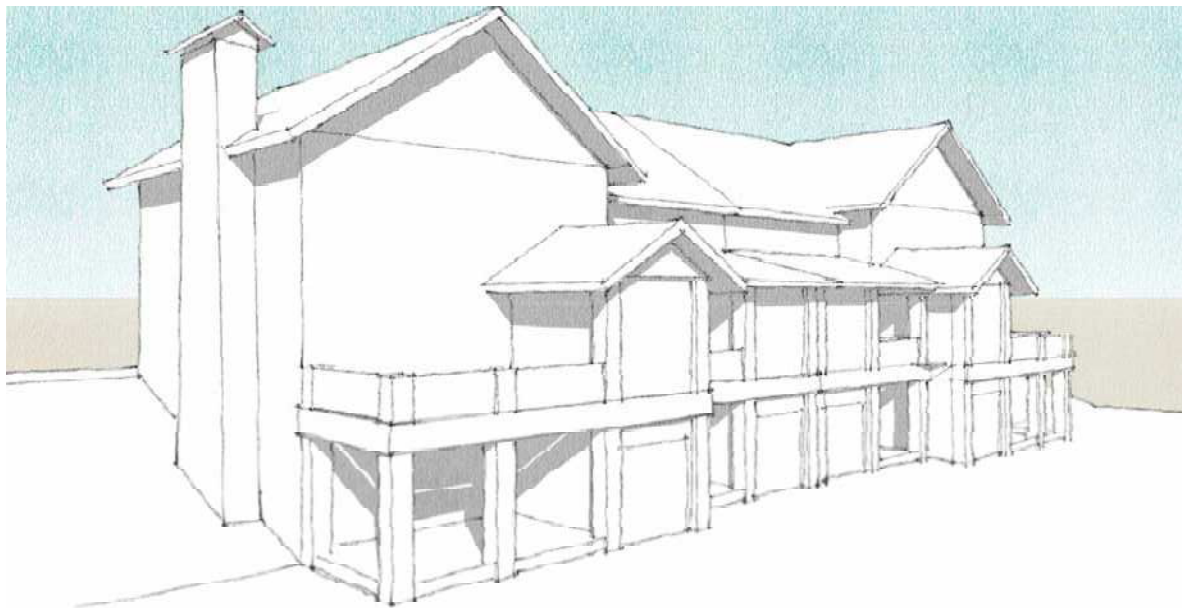
REAR ELEVATION

## WINDHAM MOUNTAIN SPORTING CLUB TOWN HOMES 24' UP- SLOPE

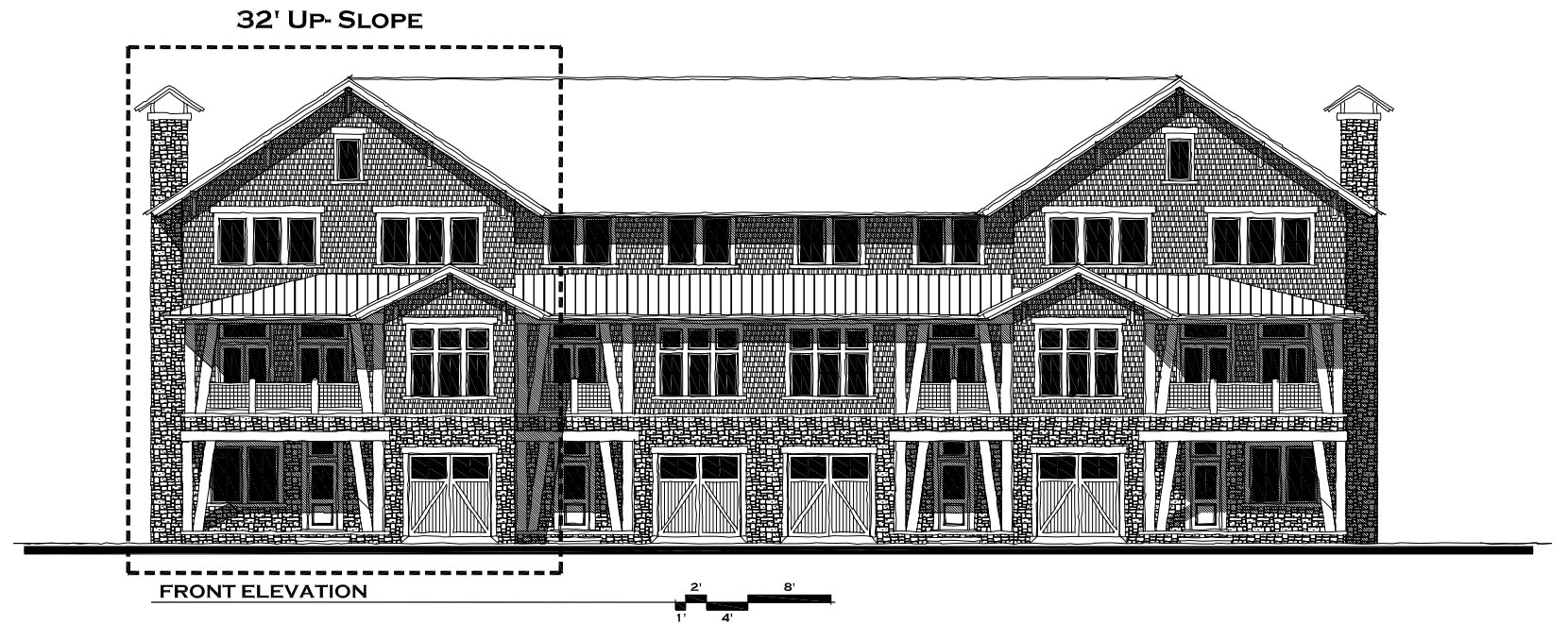


Design Management LLC

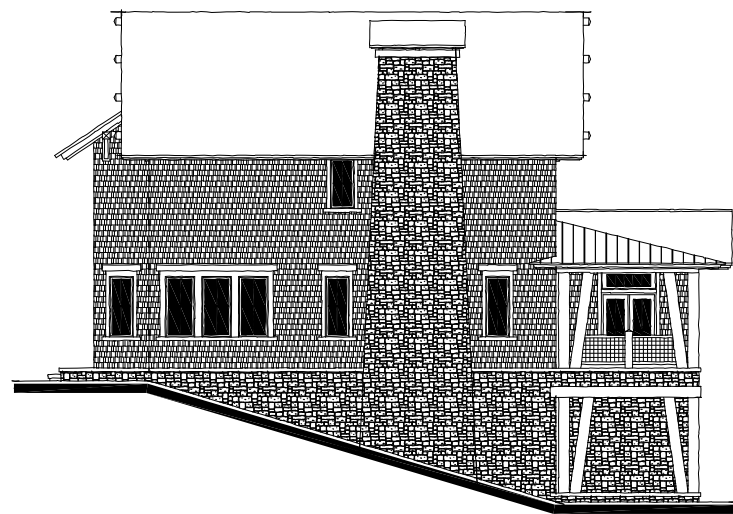




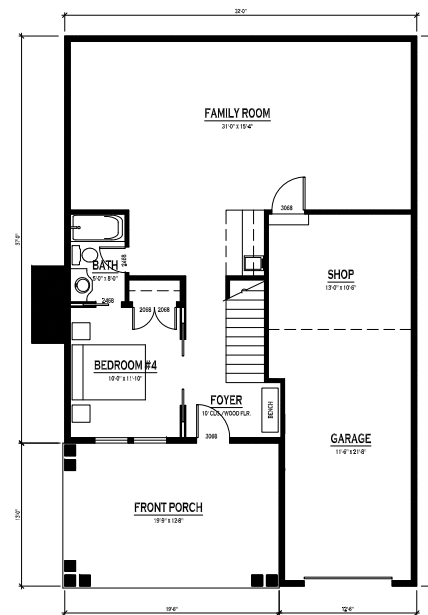
CONCEPTUAL MASSING MODEL



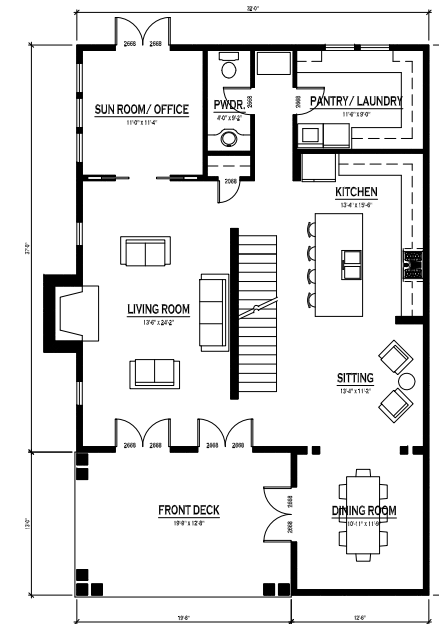
FRONT ELEVATION



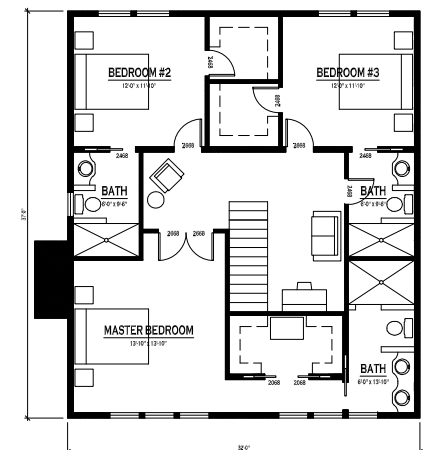
SIDE ELEVATION



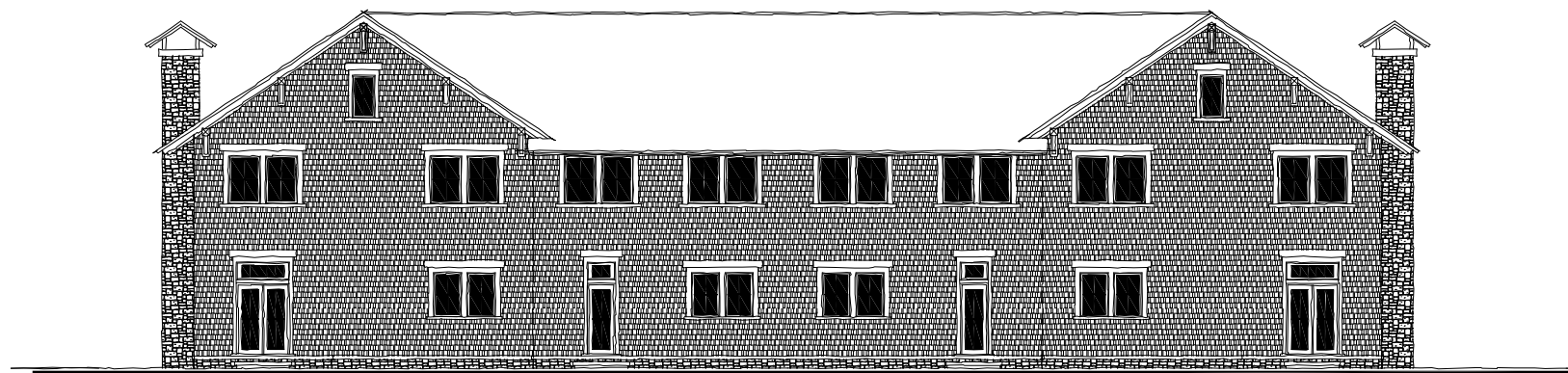
**BASEMENT PLAN**  
935 SQ. FT. (HEATED)



**FIRST FLOOR PLAN**  
1,360 SQ. FT. (HEATED)



**SECOND FLOOR PLAN**  
1,200 SQ. FT. (HEATED)



REAR ELEVATION

## WINDHAM MOUNTAIN SPORTING CLUB TOWN HOMES 32' UP- SLOPE



Design Management LLC