



## The LA Group Landscape Architecture and Engineering, P.C. United States Forest Service (USFS) Experience

**the LA group**  
Landscape Architecture  
and Engineering, P.C.

**The LA Group** specializes in the design and engineering of Federal, State, and local projects such as recreation sites, waterfronts, historic sites, campgrounds, roads and parking lots, trails, utilities and recreation infrastructure, and offices and maintenance facilities. Many of our projects have been located in and around sensitive areas such as wetlands, water bodies, woodlands, and historic and cultural resources, requiring careful environmental analysis along with creative design solutions. The LA Group is a strong advocate of environmentally sensitive design and through over three decades of experience, we have learned that successful, creative designs are those that blend a concern for environmental characteristics with client program goals, aesthetic and cultural issues and project budgets. Projects often require utilization of local expertise and specialized services and we are highly experienced in assembling and managing multi-disciplinary consultant teams.

### Design and Engineering Services

- Site Feasibility Assessment
- Environmental Analysis
- Public Outreach
- Conceptual Design
- Construction Documentation
- Cost Estimating
- Construction Support
- Permitting and Approvals
- LEED® Documentation

#### **Grey Towers National Historic Site Black Locust Allee Restoration Milford Township, PA**

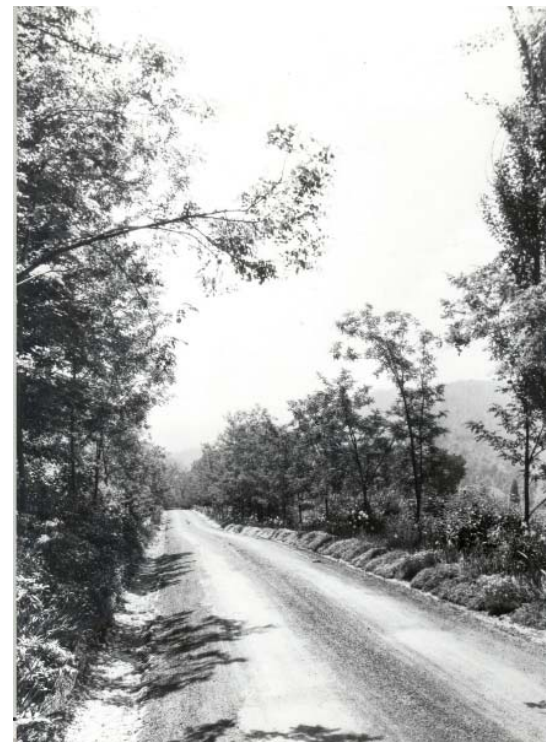
Assisted the USDA Forest Service in the preparation of a sitework construction document package for the restoration of the Black Locust Allee at the Grey Towers National Historic Site in Milford Township, PA. Grey Towers was the home of Gifford Pinchot, first chief of the USDA Forest Service and Pennsylvania governor for two terms. The USDA Forest Service works with numerous partners to carry on the Pinchot legacy by delivering public programs, interpretive tours, and conservation education programs. Program elements included restoring the allee road to its historic elevation and character; installation of a cobblestone gutter and stormwater treatment facilities; and replanting of historic Black Locust trees, shrubs, and seasonal bedding plants. Tasks included site planning; grading and drainage, planting and stabilization; irrigation design; construction detailing; cost estimating; erosion and sediment control; permitting; pre-bid meeting attendance; and limited construction support.

#### **Caywood Point Recreation Area Lodi, NY**

Provided design, engineering and architectural services related to visitor access improvements for the USDA Forest Service Caywood Point Recreation and Education area property on the Finger Lakes National Forest, located between Highway 414 and Seneca Lake in southern Seneca County. To date, all remnants of the former Boy Scout camp have been removed from the site, and a new entry road and parking lot have been installed as a first step in providing future visitor access. Program elements for this phase of project development included reconstruction of an existing road and construction of a new trail extending down to the lake; construction of new bridge crossings; relocation and restoration of historic Queens Castle; and installation of kiosks and toilets. Tasks included existing conditions analysis, schematic design, cost estimating, construction documentation, and limited construction support.



Grey Towers (Black Locust Allee Restoration)



Grey Towers (Black Locust Allee Restoration)



Caywood Point Recreation Area

**Grey Towers National Historic Site Stair Reconstruction**  
**Milford Township, PA**

Assisted the USDA Forest Service in creating an RFP (Request for Proposal) for a design/build project for the reconstruction of the wooden employee steps at Grey Towers National Historic Site in Milford Township, PA. Grey Towers was the home of Gifford Pinchot, first Chief of the USDA Forest Service and Pennsylvania governor for two terms. The USDA Forest Service works with numerous partners to carry on the Pinchot legacy by delivering public programs, interpretive tours, and conservation education programs. Project objectives included reconstruction of employee steps to improve safety and accessibility for its employees and visitors, minimize maintenance costs, and improve historic compatibility. Tasks included the development of a concept plan, cost estimate and written scope of work and bidding requirements manual.

**Green Mountain/Finger Lakes Supervisor's Office Biomass Study, Hydroelectric Feasibility Study, and Sustainable Design Assistance**  
**Rutland, VT**

Working with Biomass Energy System Center (subconsultant), The LA Group provided a study to explore potential integration of wood energy technologies into the proposed office facility as well as to begin exploring the potential for connecting other buildings on adjacent properties to a wood-fired district heating system.

Working with Earthbound Services, LLC (subconsultant), The LA Group provided a feasibility study for hydroelectric potential for the proposed office facility. The study included gathering of existing data and field investigations, hydroelectric analysis, evaluate permitting and interconnections obstacles, and estimate of potential hydroelectric power production and related design and construction costs.

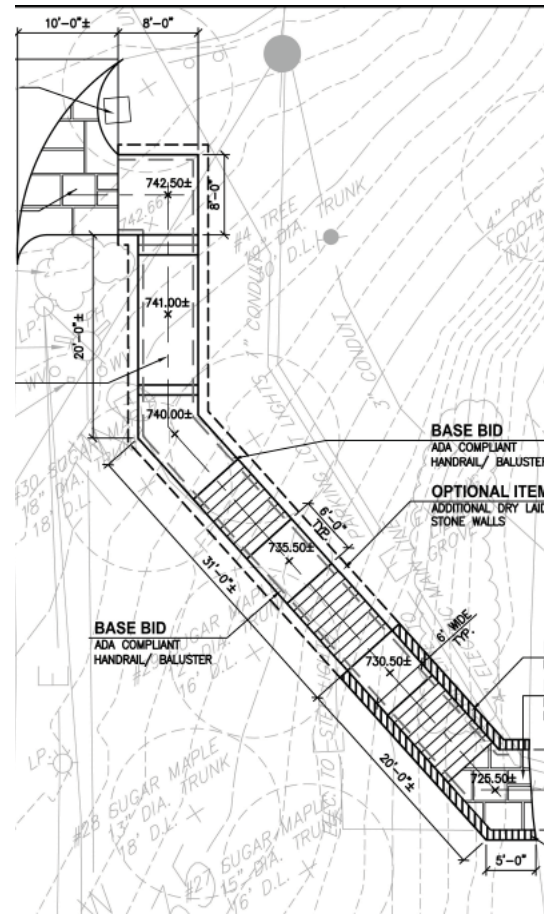
Working with Energy Balance, Inc. (subconsultant), The LA Group provided sustainable design assistance for the proposed office facility. The purpose of this work is to ensure that choices made during the design and construction phases reflect strong energy efficiency and environmental goals for the project. A primary goal was to demonstrate sustainable design to visitors, incorporating appropriate signage and visible energy systems monitoring.

**White Mountain Administrative Complex Fire Water Storage Tank Redesign**  
**Campton, NH**

Provided design and engineering services for the redesign of a fire water storage tank for the White Mountain Administrative Complex. Scope of work included review of current design and site conditions; research of applicable local, State, and Federal codes and standards; preparation of summary letter of design alternatives; and preparation of drawings, specifications and cost estimate. Draft septic disposal plans were also provided for the New Hampshire septic system permit.

**USFS Manchester Office Energy Rehabilitation**  
**Manchester, VT**

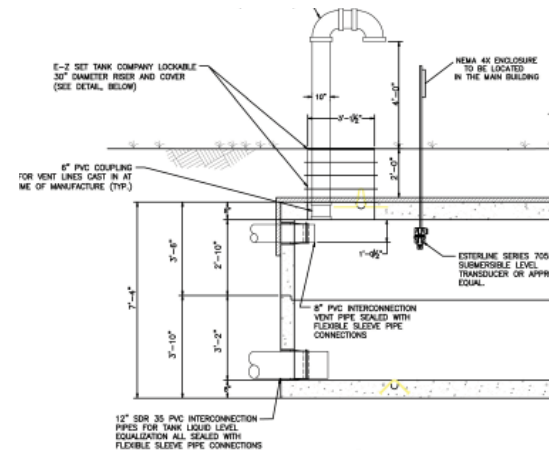
Provided project oversight/QC and task order management of architectural subconsultant design services for the USFS office energy rehabilitation project in Manchester, VT. Project objectives included review of existing building envelope and systems for energy efficiencies, identification of deficiencies and providing recommendations for cost effective alternatives. Tasks included review of existing conditions and related documents, systems analysis, cost estimating, design development and construction documents, and limited construction support.



Grey Towers (Stair Reconstruction)



Grey Towers (Stair Reconstruction)



White Mountain Fire Water Storage Tank

**Hoosier National Forest Administrative Site Geotechnical Services  
Bedford, IN**

Working with Earth Exploration, Inc. (subconsultant), the LA Group provided geotechnical investigation for the proposed new administrative facility site. The purpose of our services was to provide an evaluation of subsurface conditions for the proposed improvements and assess the impact of these conditions on features of design and construction. The proposed improvements include a new building, two warehouses, access drives, and parking areas.

**US Forest Service Wayne National Forest Frontier Boat Launch  
Ohio River, OH**

Assisted the US Forest Service with the design of a new public boat launch and day use recreation site on the Ohio River within the Wayne National Forest. Project features included consolidation and securing of gas well facility; site access drive; two lane boat ramp and make ready lane; handicap accessible walkway to launch site and separate handicap accessible boat loading facility; parking lot for 70 cars with trailers and 13 cars; allocation of day-use picnic sites; double vault toilet; and 3-panel USFS kiosk. Scope of work included site and hydrologic survey; geotechnical evaluation; site evaluation; verification of USFS prepared schematic site plans; grading, drainage, and stormwater management; planting and stabilization; construction detailing; specifications; cost estimating; and limited construction support.

**Green Mountain National Forest Workshop Rehabilitation  
Mt. Tabor, VT**

The LA Group and Hudson Design (team member) provided design and engineering services for the rehabilitation of two warehouse buildings. The buildings were originally built by the CCC: the workshop in 1938 and the warehouse in 1948. The intended use for both buildings is warehouse/cold storage. Project tasks for architectural and site improvements included inventory and analysis, building codes analysis, design development, cost estimating, and construction plans and specifications.



Wayne National Forest Boat Launch (under construction)



Green Mountain National Forest Workshop Rehabilitation