



The LA Group Landscape Architecture and Engineering, P.C. National Park Service (NPS) Experience

the LA group
Landscape Architecture
and Engineering, P.C.

The LA Group specializes in the planning and design of Federal, State, and local projects such as parks, historic sites, waterfronts, trails, campgrounds, roads and parking lots, offices and maintenance facilities, and visitor centers. The firm has successfully planned and designed over 100 park and recreation facilities, often using the expertise of our grant writing and regulatory permit specialists to bring a project from concept design to implementation. Many projects have been located in and around sensitive areas such as wetlands, water bodies, woodlands, and historic and cultural resources, requiring careful environmental analysis along with creative design solutions. Because these public facilities are used by a broad spectrum of the population, most projects have required extensive public participation throughout the planning and design stages.

Planning and Design Services

- General Management Plans
- Heritage Area Plans
- Environmental Assessments
- Viewshed Analysis
- Public Outreach
- Conceptual Design
- Construction Documentation
- Cost Estimating
- Permitting and Approvals
- Construction Administration/Inspection
- LEED® Documentation

The LA Group provided park planning, environmental and cultural compliance, economic analysis and real estate development, visual and written communications, and facilitation and consensus building for a National Park Service IDIQ contract (C4565010002 Northeastern Region). This contract ended on 08/29/2006 with all option years exercised.

The LA Group is currently part of a Project Team for the National Park Service under an IDIQ (C2000081100 A/E services Northeast and Capitol Region), providing landscape architectural and environmental services.

The LA Group is currently part of a Project Team for the National Park Service under IDIQ (C20009140 A/E services Nationwide), providing landscape architectural and environmental services.

New River Gorge National River Interpretive Planning and Auto Tour WW

New River Gorge National River was established as a national park site in 1978 to preserve and interpret the vast natural, cultural, and historical resources found in and along the New River Gorge in southern WV. The LA Group provided planning and design services to update and redesign the Fayette Station Road Coal Heritage Interpretive Opportunities Plan and develop a park-wide auto tour. This Plan included the design, fabrication, and installation of fourteen wayside exhibits, accompanying directional signs, road post marking system, and a self-guiding auto tour guide brochure and audio tape/CD. The project won an award from the National Association of Interpretation (NAI), Media Award.



New River Gorge National River



New River Gorge National River



Fire Island

tial for future development due to suitability and the lack of zoning and other techniques that guide appropriate development. The purpose of the analysis was to examine the parcels within the viewshed, research the existing land use mechanisms, and determine the potential of each parcel for development and for altering the existing views.

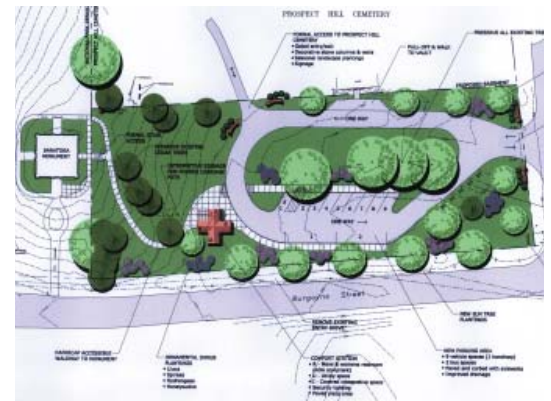
Saratoga National Historic Park Saratoga Monument Parking and Access Improvements

Village of Victory, NY

Developed access improvement plans to the recently restored Saratoga Monument, a component of the Saratoga National Historical Park. The Monument commemorates the American Army's victory at the Battles of Saratoga in 1777. The project called for a new entrance/exit and parking area, comfort station, directional signage, handicap accessibility and ornamental plantings. Historic considerations were important in the design, not only because of the Monument, but also because of the historic cemetery adjacent to its site.



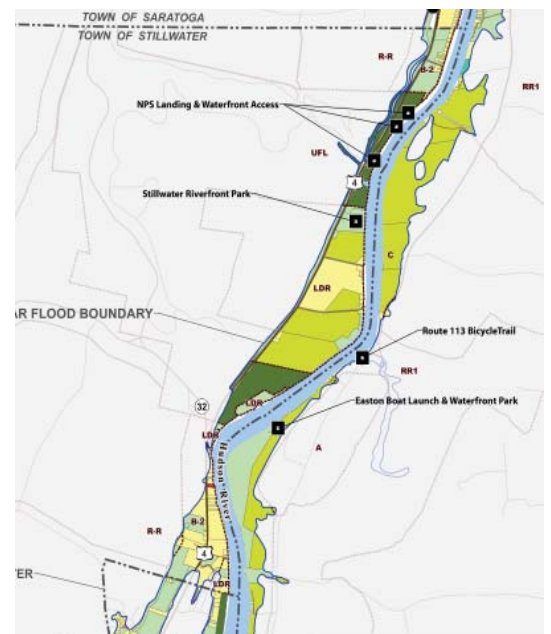
SNHP Saratoga Monument



SNHP Saratoga Monument

Saratoga National Historic Park Floodplain Mapping
Saratoga Springs, NY

Provided planning and GIS services to Saratoga National Historical Park (SNHP) to prepare a GIS based map in ESRI format to illustrate the important resources in the 100-year floodplain along the Hudson River in the towns of Saratoga, Stillwater, and Easton. The mapping included a base map showing political subdivisions and the 100-year floodplain line, present land uses, current zoning classifications, and locations of future projects. This mapping was utilized by SNHP in negotiating with General Electric for PCB cleanup activities along the Hudson River.



SNHP Floodplain Mapping

Saratoga National Historical Park General Management Plan
Town of Stillwater, NY

Assisted the National Park Service in updating their General Management Plan (GMP) for the Saratoga National Historical Park in Stillwater, NY. Scope included a feasibility analysis for development plan options. Common to all GMP alternatives included satellite maintenance facility in Old Saratoga, battlefield over flow/special event parking and access, pedestrian and vehicle access to new interpretive site areas, reconfigure sections of battle field tour road, and several variations of a new visitor center. Tasks included development of concept plans, cost estimates, design narratives, transportation evaluation, socio-economic impact analysis, and facilitation of regional stakeholders meeting to assess the feasibility of a new regional visitor center in the Old Saratoga area.

Martin Van Buren National Historic Site General Management Plan
Kinderhook, NY

Assisted the National Park Service in writing a General Management Plan (GMP) for this important historic site to provide the first comprehensive planning strategy for the park since its 1970 Master Plan. Tasks included preparation of the GMP/Environmental Impact Statement, Development of Management Alternatives, and evaluation of Environmental Consequences. GMP team meetings and workshops, public meetings, and a newsletter were included in the planning process.

Childs Park Rehabilitation
Delaware Water Gap National Recreation Area
Pike County, PA

The LA Group is a member of a multi-disciplinary design-build team assisting the NPS with this project. Permits were obtained for components including parking lot repair, new comfort stations, pedestrian bridge replacements, rehabilitation of CCC-era open air structures, trail restoration, signage and site furnishings, and ecological restoration. LA Group scope includes environmental analysis of wetlands and stream corridor, preparation of resource reports and permit applications to agencies administering the federal Clean Water Act.



Childs Park